

UN/EDIFACT

UNITED NATIONS STANDARD MESSAGE (UNSM)

CUSDEC
CUSTOMS DECLARATION MESSAGE

Innflutningstollskýrsla

Skeyti sent tölvukerfi tollyfirvalda
TOLLAKERFI

	Breytingasaga:
Jan. 2015 Útgáfa 1.0	Upprunaleg útgáfa
Okt. 2016 Útgáfa 1.1	<ul style="list-style-type: none">• Gagnastak 0057 í UNH-lið felld niður.• Bls. 29: Gagnalið DOC bætt við (eingöngu notað í skeytum frá Póstinum).• Tilvísunarnúmer úttekta úr tollvörugæmslu færð úr reit 28 í reit 44. Fært í 1390, bls. 47.
Mars 2018 Útgáfa 1.2	<ul style="list-style-type: none">• Bls. 18: Gagnaliður BGM gagnastak 1225: Kóði 4 = Beiðni um að hækka númer afgreiðslu.• Bls. 20: Auðkenni vörugæmslu í reit nr. 49 í tollskýrslu færð í 3227.• Bls. 25: Innsetningarnúmer við innsetningu í tollvörugæmslu færð í reit nr. 28 í tollskýrslu.• Reitur nr. 40 í tollskýrslu færður í gagnalið RFF í 1154, bls. 47.• "B (tollskýrslur sem eru úttektir úr tollvörugæmslum og frísvæðum) eða" felld út úr texta í skýringum við 1154.
Ágú. 2020 Útgáfa 1.3	<ul style="list-style-type: none">• Bls. 20: Heimilt að nota LOC í haus skeytis til að senda upplýsingar um tölvupóstfang og símanúmer í reit 54. - Má einungis nota ef EDI- þýðandi/möppunarskrá hugbúnaðar styður ekki COM-lið í þessum tilgangi.• Gagnastak 3224 stækkað í an..70.• Bls. 47: Reitur 39 Kvótar ekki notaður fyrir en viðk. stofnun hefur úthlutun tollkvóta rafrænt - nota skal reit 47 sbr. leiðbeiningar við útfyllingu tollskýrslu, nota gagnaliðinn DOC og skrá UND og TKV01, sbr. bls. 48.• Bls. 36: Alltaf skal senda gagnliði kostnaðar.• Bls. 51: Ekki skal senda magntölu þegar lykill = PP2 eða PL2.
Nóv. 2022 Útgáfa 1.4	Bls. 40: Kóða ZZZ bætt við 6313 og vísar til kóða sölu- og flutninsumbúða í 6411

CUSDEC:

Útgefið af: Skatturinn
Útgáfunúmer: 1.4
Dags: Nóvember 2022

EDIFACT-útgáfa:

Skeyti: CUSDEC
Útgáfa: D96A
Staða: 2
Endurskoðun: 3
Dags. útgáfu: 95-11
Útgáfuaðili: UN (Sameinuðu þjóðirnar)

Efnisyfirlit

INNGANGUR EDIFACT	4
UPPBYGGING CUSDEC	6
LÍÐIR CUSDEC Í STAFRÓFSRÖÐ	11
ÞVOTTASNÚRA	12
LÝSING LIÐA	17

Inngangur EDIFACT

Þessi texti er inngangur að skilgreiningu SP á CUSDEC-skeytinu. Hann er birtur hér óbreyttur.

For general information on UN standard message types see UN Trade Data Interchange Directory, UNTDID, Part 4, Section 2.6, UN/ECE UNSM General Introduction

0. INTRODUCTION

This specification provides the definition of the Customs declaration message (CUSDEC) to be used in Electronic Data Interchange (EDI) between trading partners involved in administration, commerce and transport.

1. SCOPE

1.1 Functional Definition

This Customs Declaration Message (CUSDEC) permits the transfer of data from a declarant to a customs administration for the purpose of meeting legislative and/or operational requirements in respect of the declaration of goods for import, export or transit. The message may also be used, for example :

- to transmit data from an exporter in one country to an importer in another country;
- to transmit consignment data from one customs administration to another;
- to transmit data from a customs authority to other governments agencies and/or interested administrations.
- to transmit data from a declarant to the appropriate data collection agency on the movement of goods between statistical territories.

1.2 Field of Application

This message may be applied for both national and international trade. It is based on universal practice and is not dependent on the type of business or industry.

1.3 Principles

This message incorporates the necessary transport, statistical and customs information. Provision has also been made for the inclusion of appropriate commercial information which may be accepted by customs in lieu of supporting documentation.

The design principles adopted allow for referencing one or more commercial documents pertaining to the same declaration and for the grouping of document lines into a single customs item. A

customs item consists of the grouping of those document lines having the same customs characteristics (e.g. tariff number, declared use, etc). The message correspondingly permits the use of single or multi-packaging concepts and their identification to a customs item.

2. REFERENCES

See UNTDID, Part 4, Chapter 2.6 UN/ECE UNSM - General Introduction, Section 1.

3. TERMS AND DEFINITIONS

See UNTDID, Part 4, Chapter 2.6 UN/ECE UNSM - General Introduction, Section 2.

Uppbygging CUSDEC

Hér er sýnd uppbygging CUSDEC-skeytisins í heild.
Þeir liðir sem ekki eru notaðir, eru skyggðir í þessu yfirliti.

TAG	NAME	S	REPT		
UNH	MESSAGE HEADER	M	1		
BGM	BEGINNING OF MESSAGE	M	1		
CST	CUSTOMS STATUS OF GOODS	C	1		
LOC	PLACE/LOCATION IDENTIFICATION	C	99		
DTM	DATE/TIME/PERIOD	C	15		
GIS	GENERAL INDICATOR	C	25		
FII	FINANCIAL INSTITUTION INFORMATION	C	1		
MEA	MEASUREMENTS	C	5		
EQD	EQUIPMENT DETAILS	C	999		
SEL	SEAL NUMBER	C	999		
Group 1 - References				C	99
RFF	REFERENCE	M	1		
DTM	DATE/TIME/PERIOD	C	1		
Group 2 - Package loop				C	10
PAC	PACKAGE	M	1		
Group 3 - Package identification				C	999
PCI	PACKAGE IDENTIFICATION	M	1		
FTX	FREE TEXT	C	1		
Group 4 - Details of transport				C	5
TDT	DETAILS OF TRANSPORT	M	1		
TPL	TRANSPORT PLACEMENT	C	1		
Group 5 - Document loop				C	10
DOC	DOCUMENT/MESSAGE DETAILS	M	1		
DTM	DATE/TIME/PERIOD	C	2		
LOC	PLACE/LOCATION IDENTIFICATION	C	1		
Group 6 - Name and address loop				C	10
NAD	NAME AND ADDRESS	M	1		
RFF	REFERENCE	C	10		
CTA	CONTACT INFORMATION	C	1		
COM	COMMUNICATION CONTACT	C	5		
Group 7 - Terms of delivery loop				C	1
TOD	TERMS OF DELIVERY	M	1		
LOC	PLACE/LOCATION IDENTIFICATION	C	2		
FTX	FREE TEXT	C	1		
Group 8 - Monetary loop				C	25
MOA	MONETARY AMOUNT	M	1		
Group 9 - Currencies loop				C	1
CUX	CURRENCIES	M	1		
DTM	DATE/TIME/PERIOD	C	1		

DETAIL SECTION -----

UNS SECTION CONTROL M 1

Group 10 - Documents loop				C	999	
DMS	DOCUMENT/MESSAGE SUMMARY	M	1			
DTM	DATE/TIME/PERIOD	C	1			
MEA	MEASUREMENTS	C	5			
Group 11 - Monetary loop				C	25	
MOA	MONETARY AMOUNT	M	1			
Group 12 - Currencies loop				C	1	
CUX	CURRENCIES	M	1			
DTM	DATE/TIME/PERIOD	C	1			
Group 13 - Terms of delivery loop				C	1	
TOD	TERMS OF DELIVERY	M	1			
LOC	PLACE/LOCATION IDENTIFICATION	C	2			
FTX	FREE TEXT	C	1			
Group 14 - Name and address loop				C	10	
NAD	NAME AND ADDRESS	M	1			
Group 15 - Documents loop				C	10	
DOC	DOCUMENT/MESSAGE DETAILS	M	1			
DTM	DATE/TIME/PERIOD	C	2			
LOC	PLACE/LOCATION IDENTIFICATION	C	1			
Group 16 - Package loop				C	10	
PAC	PACKAGE	M	1			
Group 17 - Package id. loop				C	999	
PCI	PACKAGE IDENTIFICATION	M	1			
FTX	FREE TEXT	C	1			
RFF	REFERENCE	C	1			
Group 18 - Payment terms loop				C	5	
PAT	PAYMENT TERMS BASIS	M	1			
MOA	MONETARY AMOUNT	C	1			
PCD	PERCENTAGE DETAILS	C	1			
FTX	FREE TEXT	C	1			
Group 19 - Allowance/charge loop				C	10	
ALC	ALLOWANCE OR CHARGE	M	1			
RTE	RATE DETAILS	C	1			
MOA	MONETARY AMOUNT	C	1			
PCD	PERCENTAGE DETAILS	C	1			
QTY	QUANTITY	C	1			
Group 20 - Currencies loop				C	1	
CUX	CURRENCIES	M	1			
DTM	DATE/TIME/PERIOD	C	1			
Group 21 - Line item loop				C	9999	
LIN	LINE ITEM	M	1			
PIA	ADDITIONAL PRODUCT ID.	C	1			
QTY	QUANTITY	C	1			
PRI	PRICE DETAILS	C	2			
PCD	PERCENTAGE DETAILS	C	1			

MEA	MEASUREMENTS	C	5		
QVR	QUANTITY VARIANCES	C	5		
MOA	MONETARY AMOUNT	C	15		
NAD	NAME AND ADDRESS	C	10		
GIR	RELATED IDENTIFICATION NUMBERS	C	9999		
Group 22 - Documents loop				C	10
DOC	DOCUMENT/MESSAGE DETAILS	M	1		
DTM	DATE/TIME/PERIOD	C	2		
Group 23 - Allowance/charge loop				C	10
ALC	ALLOWANCE OR CHARGE	M	1		
RTE	RATE DETAILS	C	1		
MOA	MONETARY AMOUNT	C	1		
PCD	PERCENTAGE DETAILS	C	1		
QTY	QUANTITY	C	1		
Group 24 - Currencies loop				C	1
CUX	CURRENCIES	M	1		
DTM	DATE/TIME/PERIOD	C	1		
Group 25 - Terms of delivery loop				C	1
TOD	TERMS OF DELIVERY	M	1		
LOC	PLACE/LOCATION IDENTIFICATION	C	2		
Group 26 - Payment terms loop				C	5
PAT	PAYMENT TERMS BASIS	M	1		
MOA	MONETARY AMOUNT	C	1		
PCD	PERCENTAGE DETAILS	C	1		
FTX	FREE TEXT	C	1		
Group 27 - Item description loop				C	5
IMD	ITEM DESCRIPTION	M	1		
FTX	FREE TEXT	C	1		
Group 28 - Package loop				C	10
PAC	PACKAGE	M	1		
Group 29 - Package id. loop				C	999
PCI	PACKAGE IDENTIFICATION	M	1		
FTX	FREE TEXT	C	1		
RFF	REFERENCE	C	1		
Group 30 - Customs status loop				C	9999
CST	CUSTOMS STATUS OF GOODS	M	1		
FTX	FREE TEXT	C	9		
LOC	PLACE/LOCATION IDENTIFICATION	C	25		
DTM	DATE/TIME/PERIOD	C	5		
MEA	MEASUREMENTS	C	20		
NAD	NAME AND ADDRESS	C	5		
TDT	DETAILS OF TRANSPORT	C	9		
Group 31 - Package loop				C	10
PAC	PACKAGE	M	1		
Group 32 - Package id. loop				C	999
PCI	PACKAGE IDENTIFICATION	M	1		
FTX	FREE TEXT	C	1		

Group 33 - Monetary loop				C	25	}
MOA	MONETARY AMOUNT	M	1			
Group 34 - Currencies loop				C	1	}
CUX	CURRENCIES	M	1			
DTM	DATE/TIME/PERIOD	C	1			
Group 35 - Reference loop				C	999	}
RFF	REFERENCE	M	1			
DTM	DATE/TIME/PERIOD	C	1			
GIN	GOODS IDENTITY NUMBER	C	99			
MOA	MONETARY AMOUNT	C	1			
Group 36 - Item description loop				C	1	}
IMD	ITEM DESCRIPTION	M	1			
FTX	FREE TEXT	C	5			
Group 37 - Documents loop				C	25	}
DOC	DOCUMENT/MESSAGE DETAILS	M	1			
DTM	DATE/TIME/PERIOD	C	2			
LOC	PLACE/LOCATION IDENTIFICATION	C	1			
NAD	NAME AND ADDRESS	C	5			
Group 38 - Terms of delivery loop				C	1	}
TOD	TERMS OF DELIVERY	M	1			
LOC	PLACE/LOCATION IDENTIFICATION	C	2			
FTX	FREE TEXT	C	1			
Group 39 - Nature of cargo loop				C	1	}
GDS	NATURE OF CARGO	M	1			
FTX	FREE TEXT	C	1			
Group 40 - General indicator loop				C	25	}
GIS	GENERAL INDICATOR	M	1			
PCD	PERCENTAGE DETAILS	C	1			
DTM	DATE/TIME/PERIOD	C	1			
RFF	REFERENCE	C	1			
Group 41 - Duty/tax/fee loop				C	10	}
TAX	DUTY/TAX/FEE DETAILS	M	1			
MOA	MONETARY AMOUNT	C	2			
GIS	GENERAL INDICATOR	C	1			
Group 42 - Quantity variances loop				C	1	}
QVR	QUANTITY VARIANCES	M	1			
QTY	QUANTITY	C	1			
Group 43 - References loop				C	1	}
RFF	REFERENCE	M	1			
DTM	DATE/TIME/PERIOD	C	1			
Group 44 - Related id. numbers loop				C	50	}
GIR	RELATED IDENTIFICATION NUMBERS	M	1			
GIS	GENERAL INDICATOR	C	10			
NAD	NAME AND ADDRESS	C	1			
MEA	MEASUREMENTS	C	5			
Group 45 - Monetary loop				C	10	}
MOA	MONETARY AMOUNT	M	1			

Group 46 - Currencies loop				C	1	
CUX	CURRENCIES	M	1			
DTM	DATE/TIME/PERIOD	C	1			
Group 47 - Duty/tax/fee loop				C	10	
TAX	DUTY/TAX/FEE DETAILS	M	1			
MOA	MONETARY AMOUNT	C	2			
GIS	GENERAL INDICATOR	C	1			
Group 48 - Documents loop				C	5	
DOC	DOCUMENT/MESSAGE DETAILS	M	1			
DTM	DATE/TIME/PERIOD	C	2			
LOC	PLACE/LOCATION IDENTIFICATION	C	1			

SUMMARY SECTION -----

UNS	SECTION CONTROL	M	1			
CNT	CONTROL TOTAL	C	5			

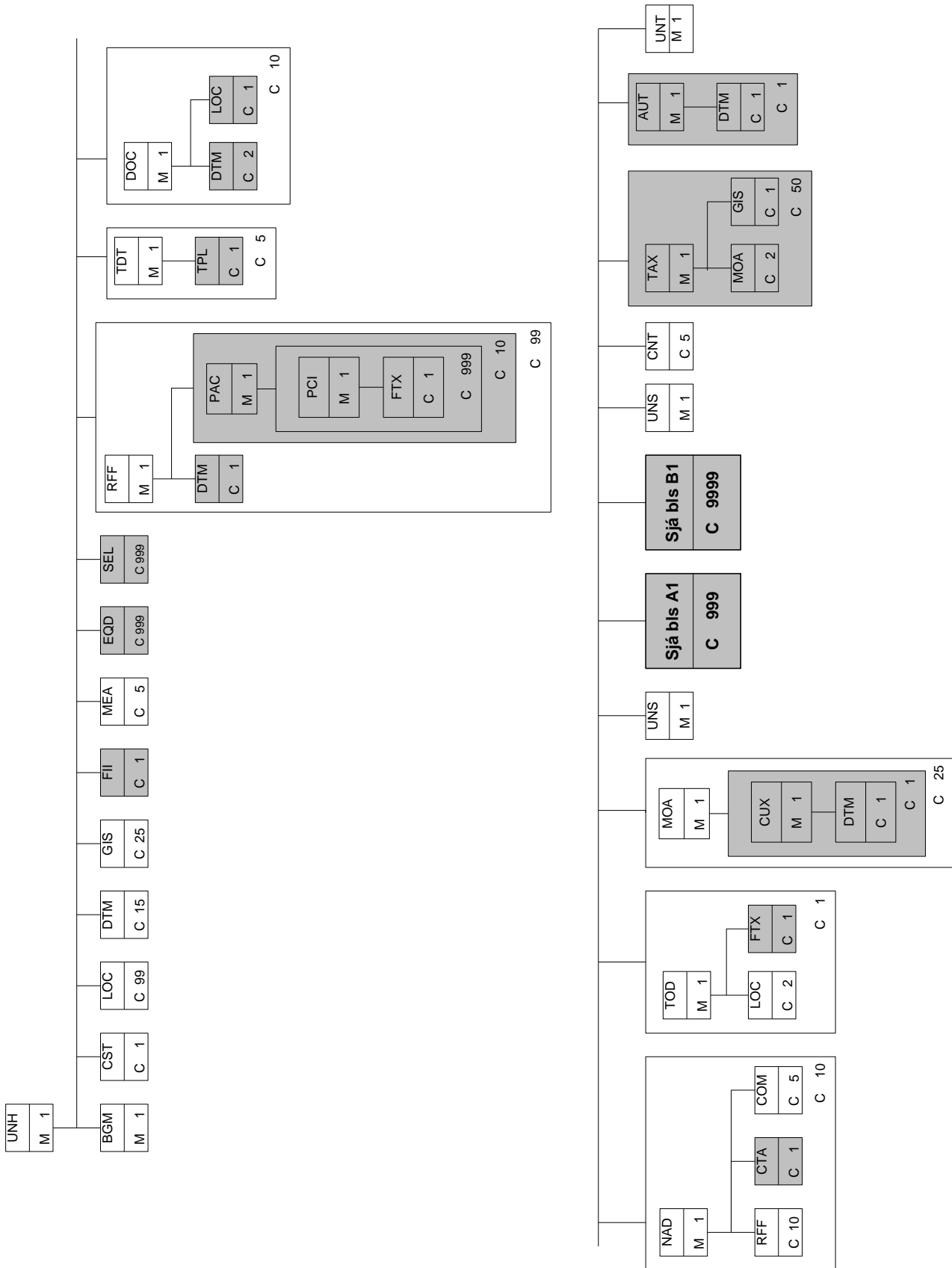
Group 49 - Duty/tax/fee loop				C	50	
TAX	DUTY/TAX/FEE DETAILS	M	1			
MOA	MONETARY AMOUNT	C	2			
GIS	GENERAL INDICATOR	C	1			
Group 50 - Authentication				C	1	
AUT	AUTHENTICATION	M	1			
DTM	DATE/TIME/PERIOD	C	1			

UNT	MESSAGE TRAILER	M	1			
-----	-----------------	---	---	--	--	--

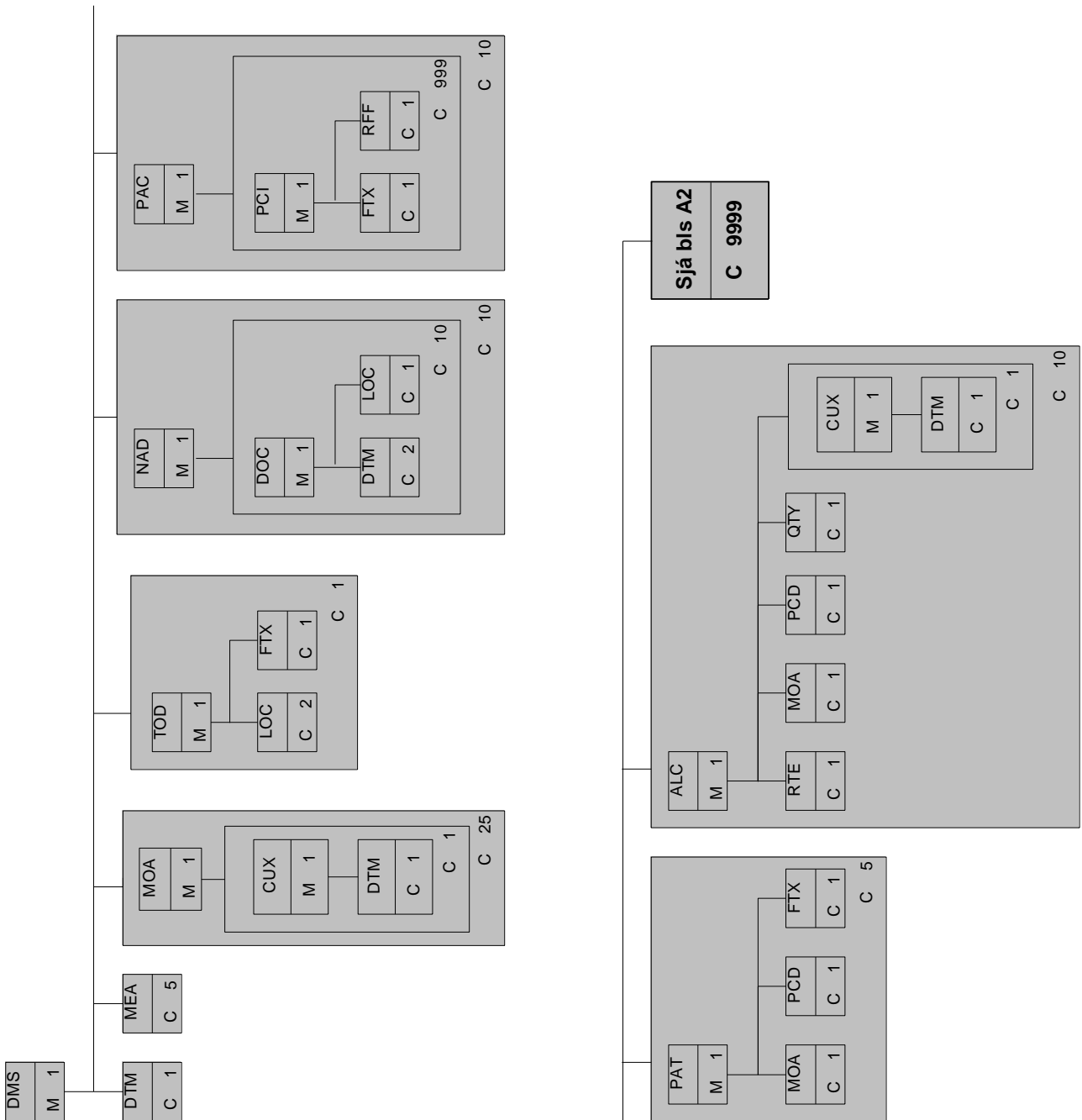
Liðir CUSDEC í stafrófsröð

ALC ALLOWANCE OR CHARGE
AUT AUTHENTICATION
BGM BEGINNING OF MESSAGE
CNT CONTROL TOTAL
COM COMMUNICATION CONTACT
CST CUSTOMS STATUS OF GOODS
CTA CONTACT INFORMATION
CUX CURRENCIES
DMS DOCUMENT/MESSAGE SUMMARY
DOC DOCUMENT/MESSAGE DETAILS
DTM DATE/TIME/PERIOD
EQD EQUIPMENT DETAILS
FII FINANCIAL INSTITUTION INFORMATION
FTX FREE TEXT
GDS NATURE OF CARGO
GIN GOODS IDENTITY NUMBER
GIR RELATED IDENTIFICATION NUMBERS
GIS GENERAL INDICATOR
IMD ITEM DESCRIPTION
LIN LINE ITEM
LOC PLACE/LOCATION IDENTIFICATION
MEA MEASUREMENTS
MOA MONETARY AMOUNT
NAD NAME AND ADDRESS
PAC PACKAGE
PAT PAYMENT TERMS BASIS
PCD PERCENTAGE DETAILS
PCI PACKAGE IDENTIFICATION
PIA ADDITIONAL PRODUCT ID.
PRI PRICE DETAILS
QTY QUANTITY
QVR QUANTITY VARIANCES
RFF REFERENCE
RTE RATE DETAILS
SEL SEAL NUMBER
TAX DUTY/TAX/FEE DETAILS
TDT DETAILS OF TRANSPORT
TOD TERMS OF DELIVERY
TPL TRANSPORT PLACEMENT
UNH MESSAGE HEADER
UNS SECTION CONTROL
UNT MESSAGE TRAILER

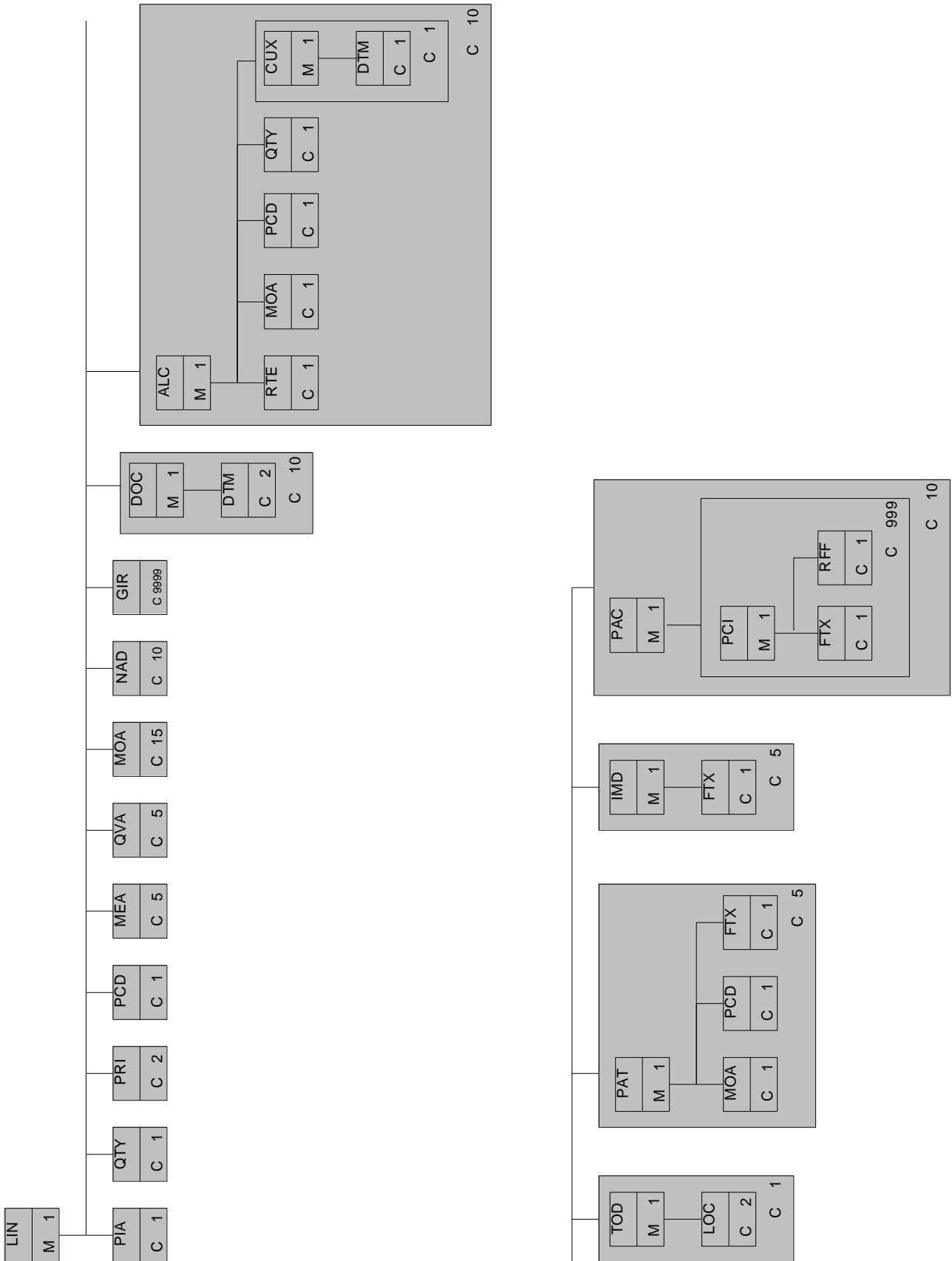
Þvottasúra



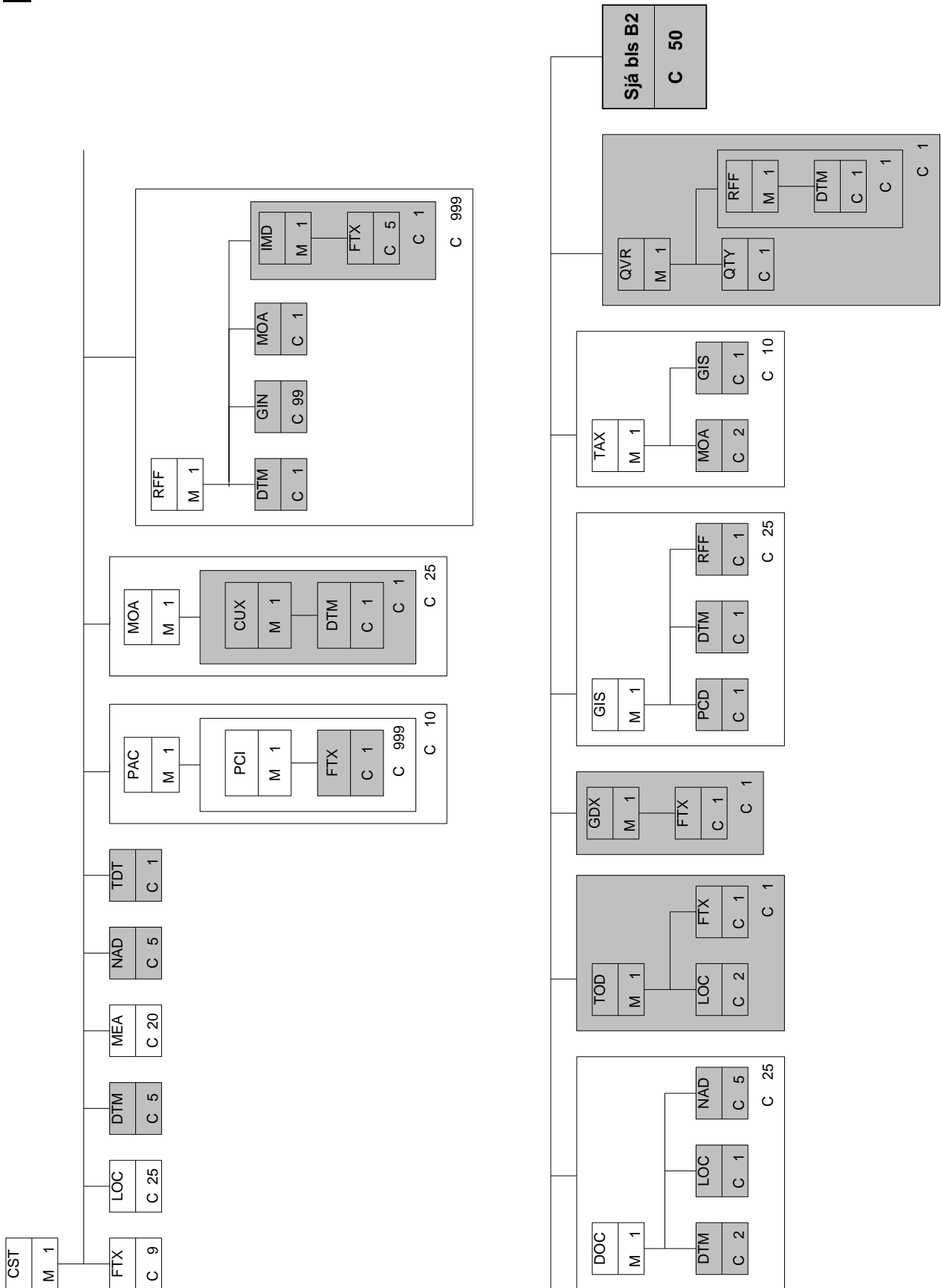
A1



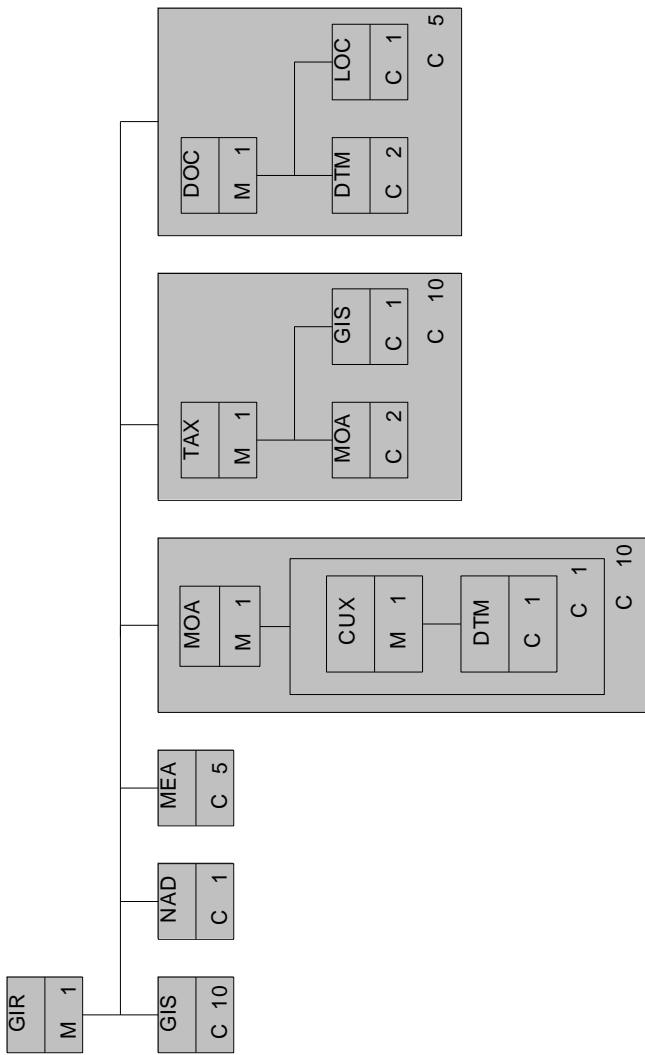
A2



B1



B2



Lýsing liða

Í þessum kafla eru sýndir allir liðir skeytisins. Þeir liðir sem ekki eru notaðir eru skyggðir og sama gildir um þau gagnastök sem ekki eru notuð. Þennan hluta er gott að lesa með yfirlitinu yfir uppbygginguna og þvottasnúruyfirlitinu, til þess að sjá samhengi hlutanna. Hvarvetna þar sem vísað er í reiti í þessu skjali er átt við innflutningsskýrslu á eyðublaði E-2 (SAD)

UNH - M 1 - MESSAGE HEADER			
<i>Function : To head, identify and specify a message.</i>			
0062 MESSAGE REFERENCE NUMBER	M	an..14	Einkvæmt raðnúmer skeytis innan sendingar, gefið af SMT-þýðanda eða hugbúnaði tengdum honum. Tilvísunarnúmer skal vera það sama og í 0062 í UNT skeytahlutanum.
S009 MESSAGE IDENTIFIER	M		
0065 Message type identifier	M	an..6	*CUSDEC=Tollskýrsla
0052 Message version number	M	an..3	*D
0054 Message release number	M	an..3	*96A = Edifact directory D.96A
0051 Controlling agency, coded	M	an..2	*UN Útgefið af: UN=Sameinuðu þjóðirnar
0057 Association assigned code	C	an..6	
0068 COMMON ACCESS REFERENCE	C	an..35	
S010 STATUS OF THE TRANSFER	C		
0070 Sequence message transfer number	M	n..2	
0073 First/last sequence message transfer indic.	C	a1	

Dæmi: UNH+412352675+CUSDEC:D:96A:UN'

BGM - M 1 - BEGINNING OF MESSAGE

Function : To specify message name and function.

C002 DOCUMENT/MESSAGE NAME	C		
1001 Document/message name, coded	C	an..3	*960 = SAD tollskýrsla (Single Administrative document)
1131 Code list qualifier	C	an..3	
3055 Code list resp. agency, coded	C	an..3	
1000 Document/message name	C	an..35	
1004 DOCUMENT/MESSAGE NUMBER	C	an..35	Sendingarnúmer skv. farmskrá. (reitur nr. 18) Vartölu sendingarnúmers skal sleppa í skeytinu
1225 MESSAGE FUNCTION, CODED	C	an..3	*9 = Upprunalegt (þ.e. ný tollskýrsla) *4 = Beiðni um leiðréttingu á þegar tollafgreiddri tollskýrslu eða beiðni um fullnaðaruppgjör bráðabirgðatollafgreiðslu
4343 RESPONSE TYPE, CODED	C	an..3	

Skýringar:

1225 - Með 9 = Upprunalegt, er átt við að um venjulega sendingu tollskýrslu er að ræða. Þessi kóði er alltaf notaður innan hvernar afgreiðslu.

Með 4 = Tollskýrsla leiðrétt eftir tollafgreiðslu eða fullnaðaruppgjör bráðabirgðatollskýrslu (einnig uppgjör innsetningar í tollvöruheymslu) - reitur 1.3 (beiðni um nýja afgreiðslu - leiðrétting á þegar tollafgreiddri tollskýrslu - einungis notað þegar númer afgreiðslu er hækkað).

Dæmi:

BGM+960+LTTU01070DKCPHW130+9'

BGM+960+LTTU01070DKCPHW130+4' – Beiðni um nýja afgreiðslu – leiðrétting þegar tollafgreiddrar tollskýrslu

CST - M 1 - CUSTOMS STATUS OF GOODS

Function : To specify goods in terms of customs identities, status and intended use.

1496 GOODS ITEM NUMBER	C	n..5	
C246 CUSTOMS IDENTITY CODES	C		
7361 Customs code identification	M	an..18	Markaðssvæði (reitur nr. 1, 1. hluti)
1131 Code list qualifier	C	an..3	*104 = Markaðssvæði (reitur nr. 1.1)
3055 Code list responsible agency, coded	C	an..3	*159 = Tollyfirvöld á Íslandi
C246 CUSTOMS IDENTITY CODES	C		
7361 Customs code identification	M	an..18	Tegund tollafgreiðslu (reitur nr. 1, 2. hluti)
1131 Code list qualifier	C	an..3	*105 = Tegund tollafgreiðslu (reitur nr. 1.2)
3055 Code list responsible agency, coded	C	an..3	*159 = Tollyfirvöld á Íslandi
C246 CUSTOMS IDENTITY CODES	C		
7361 Customs code identification	M	an..18	Númer afgreiðslu (reitur nr. 1, 3. hluti)
1131 Code list qualifier	C	an..3	*109 = Númer afgreiðslu (reitur nr. 1.3)
3055 Code list responsible agency, coded	C	an..3	*159 = Tollyfirvöld á Íslandi
C246 CUSTOMS IDENTITY CODES	C		
7361 Customs code identification	M	an..18	Tegund viðskipta (reitur nr. 24)
1131 Code list qualifier	C	an..3	*71 = Tegund viðskipta (reitur nr. 24)
3055 Code list responsible agency, coded	C	an..3	*159 = Tollyfirvöld á Íslandi

Skýringar:

Sjá leiðbeiningar tollyfirvalda

LOC - C 99 - PLACE/LOCATION IDENTIFICATION

Function :To identify a place or location relevant to the entire message. For example, port of loading, office of entry, etc.

3227 PLACE/LOCATION QUALIFIER	M	an..3	*35 = Sendingarland, sbr. a-hluti reits nr. 15 C. Sjá leiðbeiningar tollyfirvalda. *40 = Viðskiptaland (reitur nr. 11) *14 = Geymslustaður vöru (reitur nr. 30) *18 = Auðkenni vörugeymslu (reitur nr. 49) *158 = Tölvupóstfang og símanúmer (reitur nr. 54)
C517 LOCATION IDENTIFICATION	C		
3225 Place/location identification	C	an..25	Kóði lands (2 stafir) ef 3227 = 35 og 40 Kóði geymslustaðar (3 stafir) ef 3227 = 14 Kóði vörugeymslu (3 stafir) ef 3227 = 18 EM (Electronic mail) og TE (Telephone) ef 3227 = 158
1131 Code list qualifier	C	an..3	
3055 Code list responsible agency, coded	C	an..3	*5 = ISO ef 3227 = 35 og 40 *159 = Tollyfirvöld á Íslandi ef 3227 = 14, 18 og 158
3224 Place/location	C	an..70	Tölvupóstfang ef 3225 = EM, símanúmer ef 3225 = TE
C519 RELATED LOCATION ONE ID	C		
3223 Related place/location one identification	C	an..25	
1131 Code list qualifier	C	an..3	
3055 Code list responsible agency, coded	C	an..3	
3222 Related place/location one	C	an..70	
C553 RELATED LOCATION TWO ID	C		
3233 Related place/location two identification	C	an..25	
1131 Code list qualifier	C	an..3	

3055 Code list responsible agency, coded	C	an..3	
3232 Related place/location two	C	an..70	
5479 RELATION, CODED	C	an..3	

Skýringar:

3227 - Með 18 = Auðkenni vöruheymislu í reit 49. Eingöngu nota þegar tegund afgreiðslu í reit 1.2 = TO, TV, FR eða TF. Sjá leiðbeiningar tollyfirvalda.

3225 - Með EM og TE ef ekki notað COM (sjá bls.33 - reitur 54) - Eingöngu notað með CUSDEC úr óuppfærðum EDI-þýðanda (möppunarskrá) sem styður EKKI notkun COM-gagnaliðarins. Eftir uppfærslu möppunarskrár skal nota COM-gagnaliðinn, sbr. bls. 33.

Dæmi: LOC+158+EM::159:starfsmadur@fyrirtaeki.is

LOC+158+TE::159:1234567'

Skrá skal eingöngu eitt tölvupóstfang og símanúmer.

DTM - C 15 - DATE/TIME PERIOD

Function : To identify dates, times or periods relevant to the whole message. For example, actual date of arrival, elected date of presentation, etc.

C507	DATE/TIME/PERIOD	C		
2005	Date/time/period qualifier	M	an..3	*137 = Dagsetning skeytis *35 = Viðmiðunardagssetning
2380	Date/time/period	M	an..35	Dagsetning
2379	Date/time/period fmt qualifier	M	an..3	*102 = ÖÖÁÁMMDD *203 = ÖÖÁÁMMDDKKMM

Skýringar:

2005 = 35: Eingöngu notað af Póstinum

GIS - C 25 - GENERAL INDICATOR

Function :To identify the various indicators required by a customs system. For example, special programs, release certification, duty free eligibility under GSP, etc.

C529 PROCESSING INDICATOR	M		
7365 Processing indicator, coded	M	an..3	*23 = Innflutningur (skeytið er vegna innflutnings) *0 eða *1 = Gámur (reitur nr. 19)
1131 Code list qualifier	C	an..3	*105 = Tegund tollskýrslu (þ.e. innflutningur eða útflutningur) *109 = Lyklaskrá Tollstjóra.
3055 Code list resp. agency, coded	C	an..3	*159 = Tollyfirvöld á Íslandi
7187 Process type identification	C	an..17	

Skýringar:

7365: 0: Vara sem er ekki flutt í gámi, 1: Vara sem er flutt í gámi.

1131 = 105 og 7365 = 23 tilgreinir að um innflutningsskýrslu sé að ræða.

MEA - C 5 - MEASUREMENTS

Function : To identify various measurement factors where these are required for the whole declaration (message).

6311 MEASUREMENT APPLICATION QUALIFIER	M	an..3	*WT = Þyngd
C502 MEASUREMENT DETAILS	C		
6313 Measurement dimension, coded	C	an..3	*AAD = Brúttóþyngd
6321 Measurement significance, coded	C	an..3	
6155 Measurement attribute, coded	C	an..3	
C174 VALUE/RANGE	C		
6411 Measure unit qualifier	M	an..3	*KGM = Kílógrömm
6314 Measurement value	C	n..18	Brúttóþyngd í heilum kílógrömmum (reitur nr. 13)
6162 Range minimum	C	n..18	
6152 Range maximum	C	n..18	
7383 SURFACE/LAYER INDICATOR, CODED	C	an..3	

Skýringar:

RFF-DTM-SG2 - C 99 - Reference loop

A group of segments identifying various references, manifest quantities and package identities relevant to the whole message.

RFF - M 1 - REFERENCE

Function : To identify the various references relevant to the whole message.

C506 REFERENCE	M		
1153 Referece qualifier	M	an..3	*ABE = Tilvísunarnúmer SMT-leyfishafa (reitur nr. 7) *AWB = Flugfarmbréf (Air waybill no.) (reitur nr. 21) *BM = Farmbréf skip (Bill of lading no.) (reitur nr. 21) *AEZ = Viðtökunr. bögguls (Post parcels) (reitur nr. 21) *WE = Innsetningarnúmer við innsetningu í tollvörugeymslu (reitur nr. 28)
1154 Reference number	C	an..35	
1156 Line number	C	an..6	
4000 Reference version number	C	an..35	

Skýringar:

Skýring á 1154 í tengslum við kóða fyrir 1153:

1153 = ABE - Tilvísunarnúmer SMT-leyfishafa

Tilvísunarnúmer þeirrar innflutningsskýrslu og fylgiskjala hennar í bókhaldi, sem CUSDEC-skeytið tekur til. Númerið getur verið allt að 35 stafir og skal vera einkvæmt. Öll tollskjöl yfir tiltekna sendingu skulu geymd saman og bera sama tilvísunarnúmerið.

1153 = AWB = Flugfarmbréf (Air waybill no.) eða BM = Farmbréf skip (Bill of lading no.) eða raðnúmer úttektar innan dags.

Sbr. reitur nr. 21 á innflutningsskýrslu. Farmskránnúmer skipsfarmbréfs eða raðnumers úttektar af frísvæði eða tollvörugeymslu (BM) er 4 stafir, en flugfarmbréfs (AWB) 11 stafir.

Ekki þarf að fylla út þetta svæði ef sendingarnúmer, sbr. reit 18 í innflutningsskýrslu, byrjar á P (póstsendingar).

1153 = AEZ = Viðtökunúmer böggla (Package number) á pósthús.

Viðtökunúmer böggla, smápakka eða bréfs, sem innflutningsskýrsla yfir vörusendingu með pósti nær yfir.

TDT-TPL - C 5 - Transport placement loop

A group of segments identifying the mode, means and identification of the transport used.

TDT - M 1 - DETAILS OF TRANSPORT

Function : To specify the transport details such as mode of transport, means of transport, its conveyance reference number and the identification of the means of transport. The segment may be pointed to by the TPL segment..

8051 TRANSPORT STAGE QUALIFIER	M	an..3	*11 = Við landamæri (At border)
8028 CONVEYANCE REFERENCE NUMBER	C	an..17	
C220 MODE OF TRANSPORT	C		
8067 Mode of transport, coded	C	an..3	Flutningsmáti (reitur nr. 25 – 1. hluti). Sjá leiðbeiningar tolyfirvalda
8066 Mode of transport	C	an..17	
C228 TRANSPORT MEANS	C		
8179 Type of means of transport identification	C	an..8	
8178 Type of means of transport	C	an..17	
C040 CARRIER	C		
3127 Carrier identification	C	an..17	
1131 Code list qualifier	C	an..3	
3055 Code list responsible agency, coded	C	an..3	
3128 Carrier name	C	an..35	
8101 TRANSIT DIRECTION, CODED	C	an..3	

C401 EXCESS TRANSPORTATION INFORMATION	C		
8457 Excess transportation reason, coded	M	an..3	
8459 Excess transportation responsibility, coded	M	an..3	
7130 Customer authorization number	C	an..17	
C222 TRANSPORT IDENTIFICATION	C		
8213 Id. of means of transport identification	C	an..9	
1131 Code list qualifier	C	an..3	
3055 Code list responsible agency, coded	C	an..3	
8212 Id. of the means of transport	C	an..35	
8453 Nationality of means of transport, coded	C	an..3	
8281 TRANSPORT OWNERSHIP, CODED	C	an..3	

Skýringar:

DOC-DTM-LOC - C 10 - Document loop

A group of segments identifying documentary requirements where they are needed as supporting information for the entire message.

DOC - M 1 - DOCUMENT/MESSAGE DETAILS

Function : To indicate a specific document required as supporting information for the entire message.

C002 DOCUMENT/MESSAGE NAME	M		
1001 Document/message name, coded	C	an..3	Sérstakur kóði: *ISP (Eingöngu notað af Póstinum) (reitur nr. 28)
1131 Code list qualifier	C	an..3	
3055 Code list resp. agency, coded	C	an..3	*159 = Tollyfirvöld á Íslandi
1000 Document/message name	C	an..35	
C503 DOCUMENT/MESSAGE DETAILS			
1004 Document/message number	C	an..35	Viðmiðunardagur tollafgreiðslu (Dddmmáá) (reitur nr. 28)
1373 Document/message status, coded	C	an..3	
1366 Document/message source	C	an..35	
3453 Language, coded	C	an..3	
3153 COMM. CHANNEL ID, CODED	C	an..3	
1220 NUMBER OF COPIES OF DOC. REQD.	C	n..2	
1218 NUMBER OF ORIGINALS OF DOC REQD	C	n..2	

Skýringar: Dæmi: DOC+ISP::159+D200616

NAD-RFF-CTA-COM - C 10 - Name and address loop

A group of segments identifying the parties relevant to the whole message, with their related references, contacts, and communication numbers.

NAD - M 1 - NAME AND ADDRESS

Function : To identify the parties relevant to the entire message. For example importer, ultimate consignee, etc.

3035 PARTY QUALIFIER	M	an..3	*CZ = Sendandi (Consignor) (reitur nr. 2) *CN = Viðtakandi (Consignee) – Innflytjandi (reitur nr. 8) *AE = Tollmiðlari (reitur nr. 14) *PS = Ábyrgðaraðili greiðslu (reitur nr. 9) *DT = Starfsmaður SMT-leyfishafa sem gerir skýrslu (reitur nr. 54)
C082 PARTY IDENTIFICATION DETAILS	C		
3039 Party id identification	M	an..17	Íslensk kennitala (10 stafir) eða EORI númer
1131 Code list qualifier	C	an..3	*166 = Kennitala *160 = EORI númer ef 3035 = CZ
3055 Code list resp. agency, coded	C	an..3	*159 = Tollyfirvöld á Íslandi
C058 NAME AND ADDRESS	C		
3124 Name and address line	M	an..35	
3124 Name and address line	C	an..35	
3124 Name and address line	C	an..35	
3124 Name and address line	C	an..35	
3124 Name and address line	C	an..35	
C080 PARTY NAME	C		
3036 Party name	M	an..35	Nafn
3036 Party name	C	an..35	
3036 Party name	C	an..35	

3036 Party name	C	an..35	
3036 Party name	C	an..35	
3045 Party name format, coded	C	an..3	
C059 STREET	C		
3042 Street and number/P.O. Box	M	an..35	Heimilisfang
3042 Street and number/P.O. Box	C	an..35	
3042 Street and number/P.O. Box	C	an..35	
3164 CITY NAME	C	an..35	Borg
3229 COUNTRY SUB-ENTITY IDENTIFIC.	C	an..9	
3251 POSTCODE IDENTIFICATION	C	an..9	Póstnúmer (má sleppa)
3207 COUNTRY, CODED	C	an..3	Lykill lands skv. UN/LOCODE ef 3035 = CZ

Skýringar:

3039: Ef íslensk kennitala, má sleppa gagnastökum 3036, 3042, 3164 og 3251

RFF - C 10 - REFERENCE

Function : To identify references relating to the party specified within the group. For example, a special mailing request number for refunds relating to the customs transaction.

C506 REFERENCE	M		
1153 Referece qualifier	M	an..3	*VA = Virðisaukaskattsúmer.
1154 Reference number	C	an..35	Virðisaukaskattsúmer, 6 stafir á lengd, sbr. reitur nr. 8 ef innflytjandi gerir tollskýrslu eða reitir nr. 8 OG nr. 9 ef tollmiðlari gerir tollskýrslu
1156 Line number	C	an..6	
4000 Reference version number	C	an..35	

Skýringar:

Virðisaukaskattsúmerin verða að eiga við kennitölu innflytjanda eða tollmiðlara þegar hann er sá sem tollafgreiðir og verður auk þess að vera í gildi. Viðeigandi virðisaukaskattsúmer skal skrá bæði í reit 8 og reit 9

Virðisaukaskattsúmerið á því alltaf við kennitölu þess aðila, sem aðflutningsgjöld verða skuldfærð á við tollafgreiðslu.

ATH! Sleppa má gagnalið í skeyti. Tollakerfi notar í því tilfelli fyrsta sjálfgefna gildandi virðisaukaskattsúmer sem skráð er í VSK-skrá Skattsins. Það númer er notað við skuldfærslu aðflutningsgjalda hjá innflytjanda, e.a. tollmiðlara. - **Virðisaukaskattsúmerin skulu þó ávallt koma fram í viðeigandi reitum í útprintun tollskýrslu!**

COM - C 5 - COMMUNICATION CONTACT

Function : To identify a communication number of a department or a person to whom communication should be directed.

C076 COMMUNICATION CONTACT	M		
3148 Communication number	M	an..512	Netfang ef 3155 = EM Símanúmer ef 3155 = TE
3155 Communication channel qualifier	M	an..3	*EM = Tölvupóstfang (Electronic mail) *TE = Símanúmer (Telephone)

Skýringar:

Þegar innflytjandi gerir skýrslu: Skrá skal netfang og símanúmer fyrirtækis í reit 8

Þegar tollmiðlari gerir skýrslu: Skrá skal netfang og símanúmer tollmiðlara í reit 14

Í báðum ofangreindum tilfellum skal skrá netfang og símanúmer starfsmanns sem gerir skýrslu í reit 54

Undantekning: Ekki skal nota COM-gagnlið ef notaður er úppfærður EDI-þýðandi (möppunarskrá). Sjá bls. 21 hér ofar. Þ.e. í því tilfalli eru reitir 8 og 14 útfylltir.

TOD-LOC-FTX - C 1 - Terms of delivery loop

A group of segments identifying the terms of delivery pertinent to the entire message.

TOD - M 1 - TERMS OF DELIVERY

Function : To identify terms of delivery, relevant to the entire message, in a coded format.

4055 TERMS OF DELIVERY FUNCTION, CODED	C	an..3	*6 = Afhendingarskilmálar (Delivery condition)
4215 TRANSPORT CHARGES METHOD OF PAYMENT, CODED	C	an..3	
C100 TERMS OF DELIVERY	C		
4053 Terms of delivery, coded	C	an..3	Lyklar skv. Incoterms 2010. Sjá einnig leiðbeiningar tollyfirvalda (reitur nr. 20 - 1. hluti)
1131 Code list qualifier	C	an..3	*158 = Terms of delivery
3055 Code list responsible agency, coded	C	an..3	*159 = Tollyfirvöld á Íslandi
4052 Terms of delivery	C	an..70	
4052 Terms of delivery	C	an..70	

Skýringar:

LOC - C 2 - PLACE/LOCATION IDENTIFICATION

Function :To identify a place or location relevant to the entire message. For example, port of loading, office of entry, etc.

3227 PLACE/LOCATION QUALIFIER	M	an..3	*1 = Staður afhendingarskilmála (Place of terms of delivery)
C517 LOCATION IDENTIFICATION	C		
3225 Place/location identification	C	an..25	Nafn staðar (reitur nr. 20 - 2. hluti)
1131 Code list qualifier	C	an..3	
3055 Code list responsible agency, coded	C	an..3	
3224 Place/location	C	an..70	
C519 RELATED LOCATION ONE ID	C		
3223 Related place/location one identification	C	an..25	
1131 Code list qualifier	C	an..3	
3055 Code list responsible agency, coded	C	an..3	
3222 Related place/location one	C	an..70	
C553 RELATED LOCATION TWO ID	C		
3233 Related place/location two identification	C	an..25	
1131 Code list qualifier	C	an..3	
3055 Code list responsible agency, coded	C	an..3	
3232 Related place/location two	C	an..70	
5479 RELATION, CODED	C	an..3	

MOA-SG9 - C 25 - Monetary amount loop

A group of segments identifying monetary amounts, currencies and their exchange rates, when required for the whole declaration.

MOA - M 1 - MONETARY AMOUNT

Function : To identify a monetary function and up to five monetary amounts.

C516 MONETARY AMOUNT	M		
5025 Monetary amount amount type qualifier	M	an..3	*39 = Heildarupphæð reiknings (reitur nr. 22) *144 = Flutningskostnaður (reitur nr. 12) *160 = Annar kostnaður (reitur nr. 12) *70 = Vátrygging (reitur nr. 12)
5004 Monetary amount	C	n..18	Upphæðin í viðkomandi mynt.
6345 Currency, coded	C	an..3	Mynt kóði, skv. ISO 4217 alpha 3 (dæmi DKK = danskar krónur)
6343 Currency qualifier	C	an..3	
4405 Status, coded	C	an..3	

Skýringar:

Fleiri upphæðir mega vera fyrir flutningskostnað (144) og annan kostnað (160). Þ.e. endurtaka má liði fyrir þessar upphæðir.

Flutningskostnaður gæti t.d. verið að hluta til í einni mynt og að hluta til í annarri.

Vátrygging er alltaf færð sem upphæð í SMT innflutningsskýrslu, þ.e. umbreytt úr % tölu á skýrslu í samsvarandi upphæð.

Þó ekki sé gerð grein fyrir tollskyldum kosnaði sem telst til tollverðs skal samt sem áður ætíð senda gagnaliði kostnaðar í skeyti, en án upphæða og myntar, t.d. ef engin kostnaður skal senda: MOA+144' MOA+160' MOA+70'

Detail Section

This section provides information relating to commercial documentation and customs requirements for the clearance of goods.

UNS - M 1 - SECTION CONTROL

Function : A service segment placed at the beginning of the detail section to indicate the beginning of that section.

0081 Section identifier

M

a1

*D

Skýringar:

Þessi liður aðskilur upplýsingar í haus aðflutningsskýrslu og upplýsingar í línum fyrir hvern vörulið.

CST-FTX-LOC-DTM-MEA-NAD-TDT-SG31-SG33-SG35-SG37-SG38-SG39-SG40-SG41-SG42-SG44 - C 9999 - Item detail loop

A group of segments identifying detailed information for a single customs item of a customs declaration.

CST - M 1 - CUSTOMS STATUS OF GOODS

Function : To identify the customs tariff of the goods, their required treatment and, where these are different to the header information, the type of declaration and the current status of the goods.

1496 GOODS ITEM NUMBER	C	n..5	Númer vöruliðar í innflutningsskýrslu (reitur nr. 32)
C246 CUSTOMS IDENTITY CODES	C		
7361 Customs code identification	M	an..18	Tollskrárnúmer skv. tollskrá, 8 stafir (reitur nr. 33)
1131 Code list qualifier	C	an..3	*169 = Harmonized system
3055 Code list responsible agency, coded	C	an..3	*159 = Tollyfirvöld á Íslandi
C246 CUSTOMS IDENTITY CODES	C		
7361 Customs code identification	M	an..18	
1131 Code list qualifier	C	an..3	
3055 Code list responsible agency, coded	C	an..3	
C246 CUSTOMS IDENTITY CODES	C		
7361 Customs code identification	M	an..18	
1131 Code list qualifier	C	an..3	
3055 Code list responsible agency, coded	C	an..3	
C246 CUSTOMS IDENTITY CODES	C		
7361 Customs code identification	M	an..18	

1131 Code list qualifier	C	an..3	
3055 Code list responsible agency, coded	C	an..3	
C246 CUSTOMS IDENTITY CODES	C		
7361 Customs code identification	M	an..18	
1131 Code list qualifier	C	an..3	
3055 Code list responsible agency, coded	C	an..3	

Skýringar:

FTX - C 1 - FREE TEXT

Function : To identify the customs description in narrative form.

4451 TEXT SUBJECT QUALIFIER	M	an..3	*AAA = Vörulýsing
4453 TEXT FUNCTION, CODED	C	an..3	
C107 TEXT REFERENCE	C		
4441 Free text, coded	M	an..3	
1131 Code list qualifier	C	an..3	
3055 Cde list resp. agency, coded	C	an..3	
C108 TEXT LITERAL	C		
4440 Free text	M	an..70	Vörulýsing (reitur nr. 31)
4440 Free text	C	an..70	
4440 Free text	C	an..70	
4440 Free text	C	an..70	
4440 Free text	C	an..70	
3453 LANGUAGE, CODED	C	an..3	

Skýringar:

LOC - C 25 - PLACE/LOCATION IDENTIFICATION

Function : To identify the places relevant to a customs item. For example, country of origin, country of export, etc.

3227 PLACE/LOCATION QUALIFIER	M	an..3	*27 = Upprunaland. Landakóði skv. ISO staðli.
C517 LOCATION IDENTIFICATION	C		
3225 Place/location identification	C	an..25	Upprunaland (reitur nr. 34a)
1131 Code list qualifier	C	an..3	
3055 Code list responsible agency, coded	C	an..3	*5 = ISO (ef 3227 = 27)
3224 Place/location	C	an..17	
C519 RELATED LOCATION ONE ID.	C		
3223 Related place/location one identification	C	an..25	
1131 Code list qualifier	C	an..3	
3055 Code list responsible agency, coded	C	an..3	
3222 Related place/location one	C	an..70	
C553 RELATED LOCATION TWO ID.	C		
3233 Related place/location two identification	C	an..25	
1131 Code list qualifier	C	an..3	
3055 Code list responsible agency, coded	C	an..3	
3232 Related place/location two	C	an..70	
5479 RELATION, CODED	C	an..3	

Skýringar:

MEA - C 20 - MEASUREMENTS

Function : To identify the necessary statistical information requirements related to a tariff number. For example, net weights, volumes, etc.

6311 MEASUREMENT APPLICATION QUALIFIER	M	an..3	*WT = Þyngd
C502 MEASUREMENT DETAILS	C		
6313 Measurement dimension, coded	C	an..3	*AAB = Brúttóþyngd (Unit gross weight) (reitur nr. 35) *AAA = Nettóþyngd (Unit net weight) (reitur nr. 38) *ZZZ = Gagnkvæm skilgreining. Skv. kóðalista
6321 Measurement significance, coded	C	an..3	
6155 Measurement attribute, coded	C	an..3	
C174 VALUE/RANGE	C		
6411 Measure unit qualifier	M	an..3	*KGM = Kílógrömm *S01 = Þyngd söluumbúða – Ál (6313 = ZZZ) *S02 = Þyngd söluumbúða - Gler (6313 = ZZZ) *S03 = Þyngd söluumbúða - Pappír (6313 = ZZZ) *S04 = Þyngd söluumbúða - Plast (6313 = ZZZ) *S05 = Þyngd söluumbúða - Stál (6313 = ZZZ) *S06 = Þyngd söluumbúða - Viður (6313 = ZZZ) *F01 = Þyngd flutningsumbúða - Ál (6313 = ZZZ) *F02 = Þyngd flutningsumbúða - Gler (6313 = ZZZ) *F03 = Þyngd flutningsumbúða - Pappír (6313 = ZZZ) *F04 = Þyngd flutningsumbúða - Plast (6313 = ZZZ) *F05 = Þyngd flutningsumbúða - Stál (6313 = ZZZ) *F06 = Þyngd flutningsumbúða - Viður (6313 = ZZZ) *F08 = Þyngd flutningsumbúða - Viðarbretti (6313 = ZZZ)
6314 Measurement value	C	n..18	
6162 Range minimum	C	n..18	

6152 Range maximum	C	n..18	
7383 SURFACE/LAYER INDICATOR, CODED	C	an..3	

Skýringar:

6314: Þyngd vöru í hverjum vörulið í kílógrömmum með þremur aukastöfum, sbr. reitir. 35 og 38 í tollskýrslu. Komma á undan aukastöfum er táknuð með punkti (.).

Ef 6313 er ZZZ: Þyngd sölu- og flutningsumbúða í kílógrömmum með allt að þremur aukastöfum, sbr. reit 47 í tollskýrslu.

Dæmi með þyngd sölu- og flutningsumbúða,

MEA+WT+ZZZ+S04+0.7'

MEA+WT+ZZZ+F04+0.2'

PAC-SG31 - C 10 - Package loop

A segment group to identify package information.

PAC - M 1 - PACKAGE

Function : To identify the number and type of manifested units that are being referenced.

7224 NUMBER OF PACKAGES	C	n..8	Fjöldi stykkja (reitur nr. 31)
C531 PACKAGING DETAILS	C		
7075 Packaging level, coded	C	an..3	
7233 Packaging related information, coded	C	an..3	
7073 Packaging terms and conditions, coded	C	an..3	
C202 PACKAGE TYPE	C		
7065 Type of packages identification	C	an..17	Lykill fyrir tegund umbúða (reitur nr. 31). Sjá leiðbeiningar tollyfirvalda
1131 Code list qualifier	C	an..3	*67 = Tegund umbúða
3055 Code list responsible agency, coded	C	an..3	*159 = Tollyfirvöld á Íslandi
7064 Type of packages	C	an..35	
C402 PACKAGE TYPE IDENTIFICATION	C		
7077 Item description type, coded	M	an..3	
7064 Type of packages	M	an..35	
7143 Item number type, coded	C	an..3	
7064 Type of packages	C	an..35	
7143 Item number type, coded	C	an..3	
C532 RETURNABLE PACKAGE DETAILS	C		
8395 Returnable package freight payment	C	an..3	

responsibility, coded 8393 Returnable package load contents, coded	C	an..3	
---	---	-------	--

7065: Sjá lykla umbúða á Tollalínu

PCI-FTX - C 999 - Package identification loop

A group of segments identifying marks and labels, and giving the description of single packages associated with a customs item.

PCI - M 1 - PACKAGE IDENTIFICATION

Function : To specify markings and labels on individual packages or physical units.

4233 MARKING INSTRUCTIONS, CODED	C	an..3	*28 = Merki, frjáls texti
C210 MARKS & LABELS	C		
7102 Shipping marks	M	an..35	Merki á vörum (reitur nr. 31)
7102 Shipping marks	C	an..35	
7102 Shipping marks	C	an..35	
7102 Shipping marks	C	an..35	
7102 Shipping marks	C	an..35	
7102 Shipping marks	C	an..35	
7102 Shipping marks	C	an..35	
7102 Shipping marks	C	an..35	
7102 Shipping marks	C	an..35	
7102 Shipping marks	C	an..35	
8275 CONTAINER/PACKAGE STATUS, CODED	C	an..3	
C827 TYPE OF MARKING	C		
7511 Type of marking, coded	M	an..3	
1131 Code list qualifier	C	an..3	
3055 Code list responsible agency, coded	C	an..3	

MOA-SG34 - C 25 - Monetary loop

A group of segments identifying various monetary amounts, currencies and rates of exchange that pertain to the customs item.

MOA - M 1 - MONETARY AMOUNT

Function : To identify the monetary amounts necessary for statistical and duty purposes.

C516 MONETARY AMOUNT	M		
5025 Monetary amount amount type qualifier	M	an..3	*38 = Vöruverð (reitur 42)
5004 Monetary amount	C	n..18	Vöruverð á hvern vörulið í viðkomandi mynt skv. fyrri hluta reits nr. 22. Hámark 15 stafir, komma meðtalín.
6345 Currency, coded	C	an..3	
6343 Currency qualifier	C	an..3	
4405 Status, coded	C	an..3	

Skýringar:

Hér er ekki tilgreind mynt, þar sem mynt í MOA-lið í reit 22 gildir fyrir línurnar líka.

RFF-DTM-GIN-MOA-SG36 - C 999 - Reference loop

A group of segments identifying references, descriptions, and monetary amounts associated with a customs item.

RFF - M 1 - REFERENCE

Function : To identify particular references relating to the customs item. For example, the invoice number of any invoice that contains merchandise on this customs item.

C506 REFERENCE	M		
1153 Referece qualifier	M	an..3	*AAQ = Gámanúmer *ABJ = (Toll-) Kvótar *IV = Reikningsnúmer *UTT = Tilvísunarnúmer úttekta úr tollvörugeysmlu eða frísvæði *AEI = Sendingarnúmer
1154 Reference number	C	an..35	Gámanúmer (reitur nr. 31) Númer úthlutaðs tollkvóta (reitur nr. 39) Númer vörureikninga (reitur nr. 44) Tilvísunarnúmer úttekta (reitur nr. 44) Sendingarnúmer fyrri tollafgreiðslu (reitur nr. 40)
1156 Line number	C	an..6	
4000 Reference version number	C	an..35	

Skýringar:

1153 = UTT = Tilvísunarnúmer úttekta úr tollvörugeysmlu

(Ef úttekt er úr innsetningu í eldra kerfi, sem var skilað á pappír, skal nota UTG).

1153 = AEI = Sendingarnúmer fyrri tollafgreiðslu, t.d. vöru sem er að koma aftur til landsins eftir útflutning eða sendingarnúmer úttektar þegar um er að ræða flutning milli tollvörugeysmla.

DOC-DTM-LOC-NAD - C 25 - Document loop

A group of segments identifying report documentary requirements of particular government agencies, with the optional name and address of the agency involved.

DOC - M 1 - DOCUMENT/MESSAGE DETAILS

Function : To indicate a specific document required as supporting information for a customs item.

C002 DOCUMENT/MESSAGE NAME	M		
1001 Document/message name, coded	C	an..3	Lykill skjals. Leyfi/vottorð (fylgiskjöl), eða skráningarnúmer ökutækis. Sjá leiðbeiningar tollyfirvalda (reitur nr. 44)
1131 Code list qualifier	C	an..3	
3055 Code list resp. agency, coded	C	an..3	*159 = Tollyfirvöld á Íslandi
1000 Document/message name	C	an..35	
C503 DOCUMENT/MESSAGE DETAILS			
1004 Document/message number	C	an..35	Númer skjals/leyfis/vottorðs/fylgiskjals eða skráningarnúmer ökutækis (reitur nr. 44)
1373 Document/message status, coded	C	an..3	
1366 Document/message source	C	an..35	
3453 Language, coded	C	an..3	
3153 COMMUNIC. CHANNEL ID, CODED	C	an..3	
1220 NUMBER OF COPIES OF DOC. REQD.	C	n..2	
1218 NUMBER OF ORIGINALS OF DOC REQD	C	n..2	

GIS-PCD-DTM-RFF - C 25 - General indicator loop

A group of segments identifying special indicators or value data related to the customs item.

GIS - M 1 - GENERAL INDICATOR

Function : A segment identifying any necessary processing indicators where these are required by customs at the item level.

C529 PROCESSING INDICATOR	M		
7365 Processing indicator, coded	M	an..3	Lyklar skv. leiðbeiningum tollyfirvalda
1131 Code list qualifier	C	an..3	*116 = Ívilnun (reitur nr. 36). Tegund tolls *117 = Tollmeðferð (reitur nr. 37 – fyrri hluti) *109 = Fyrri tollmeðferð (reitur nr. 37 – seinni hluti) *127 = Va-lykill (reitur nr. 43) *159 = Tollyfirvöld á Íslandi
3055 Code list resp. agency, coded	C	an..3	
7187 Process type identification	C	an..17	

Skýringar:

TAX-MOA-GIS - C 10 - Duty/tax/fee loop

A group of segments identifying duties/taxes/fees and methods of payment related to a customs item.

TAX - M 1 - DUTY/TAX/FEE DETAILS

Function : To identify the tax type, rate and base associated with a customs item.

5283 DUTY/TAX/FEE FUNCTION QUALIFIER	M	an..3	*1 = Lykill magntölu skv. tollskrá
C241 DUTY/TAX/FEE TYPE	C		
5153 Duty/tax/fee type, coded	C	an..3	Lykill gjaldstofns/magtölu (NET, LIT, PRO, STK, MSA o.s.frv.) sbr. tollskrá. (fremsti hluti reits nr. 47). Sjá leiðbeiningar tollyfirvalda.
1131 Code list qualifier	C	an..3	*107 = Aðflutningsgjöld (Excise duty)
3055 Code list responsible agency, coded	C	an..3	*159 = Tollyfirvöld á Íslandi
5152 Duty/tax/fee type	C	an..35	
C533 DUTY/TAX/FEE ACCOUNT DETAIL	C		
5289 Duty/tax/fee account identification	M	an..6	
1131 Code list qualifier	C	an..3	
3055 Code list responsible agency, coded	C	an..3	
5286 DUTY/TAX/FEE ASSESSMENT BASIS	C	an..15	Magntala gjaldstofns
C243 DUTY/TAX/FEE DETAIL	C		
5279 Duty/tax/fee rate identification	C	an..7	
1131 Code list qualifier	C	an..3	
3055 Code list responsible agency, coded	C	an..3	
5278 Duty/tax/fee rate	C	an..17	

5273 Duty/tax/fee rate basis identification	C	an..12	
1131 Code list qualifier	C	an..3	
3055 Code list responsible agency, coded	C	an..3	
5305 DUTY/TAX/FEE CATEGORY, CODED	C	an..3	
3446 PARTY TAX IDENTIFICATION NUMBER	C	an..20	

Skýringar:

Dæmi:

TAX+1+MSA:107:159++5'

TAX+1+NET:107:159++38.91'

Summary Section

UNS - M 1 - SECTION CONTROL

Function : A service segment placed at the beginning of the summary section to indicate the start of that section.

0081 Section identifier

M

a1

*S = Aðskilur línur fyrir hvert tollskrárnúmer frá lokaliðum skeytisins.

CNT - C 5 - CONTROL TOTAL

Function : To specify control totals. For example, the number of commercial documents, the total number of customs item, values, and packages reported in the message.

C270 CONTROL	M		
6069 Control qualifier	M	an..3	*5 = Fjöldi vöruliða í innflutningsskýrslu (reitur nr. 5) *11 = Stykkjatala (reitur nr. 6)
6066 Control value	M	an..18	Fjöldi/stykkjatala
6411 Measure unit qualifier	C	an..3	

Skýringar:

UNT - M 1 - MESSAGE TRAILER

Function : A service segment ending a message, giving the total number of segments in the message and the message reference number of the message.

0074 NUMBER OF SEGMENTS IN A MESSAGE	M	n..6	Heildarfjöldi liða í skeytinu (frá og með UNH til og með UNT).
0062 INTERCHANGE CONTROL REFERENCE	M	an..14	Sama tilvísunarnúmer og 0062 í UNH.

