



Bifreiðaskrá 2007

Skattmat í staðgreiðslu
Bifreiðahlunnindi

RSK
RÍKISSKATTSTJÓRI

Bifreiðategundir og umboð þeirra

| Tegund | Umboð | Bls. |
|---------------|----------------------------------|-------------|
| ALFA ROMEO | Alfa Romeo umboðið á Íslandi | 5 |
| AUDI | Hekla hf. | 5 |
| BMW | Bifreiðar & landbúnaðarvélar hf. | 5 |
| CHEVROLET | Bílabúð Benna ehf. | 6 |
| CITROEN | Brimborg ehf. | 6 |
| FIAT | Fiat umboðið á Íslandi | 7 |
| FORD | Brimborg ehf. | 7 |
| HONDA | Bernhard ehf. | 10 |
| HYUNDAI | Bifreiðar & landbúnaðarvélar hf. | 10 |
| ISUZU | Ingvar Helgason ehf. | 10 |
| KIA | Kia umboðið | 10 |
| LAND ROVER | Bifreiðar & landbúnaðarvélar hf. | 11 |
| LEXUS | Toyota á Íslandi hf. | 11 |
| LINCOLN | Brimborg ehf. | 11 |
| MAZDA | Brimborg ehf. | 11 |
| MERCEDES-BENZ | Bílaumboðið Askja ehf. | 11 |
| MITSUBISHI | Hekla hf. | 14 |
| NISSAN | Ingvar Helgason ehf. | 14 |
| OPEL | Ingvar Helgason ehf. | 14 |
| PEUGEOT | Bernhard ehf. | 14 |
| PORSCHE | Bílabúð Benna ehf. | 15 |
| RENAULT | Bifreiðar & landbúnaðarvélar hf. | 15 |
| SAAB | Ingvar Helgason ehf. | 16 |
| SKODA | Hekla hf. | 16 |
| SSANGYONG | Bílabúð Benna ehf. | 17 |
| SUBARU | Ingvar Helgason ehf. | 17 |
| SUZUKI | Suzuki bílar hf. | 17 |
| TOYOTA | Toyota á Íslandi hf. | 18 |
| VOLKSWAGEN | Hekla hf. | 18 |
| VOLVO | Brimborg ehf. | 19 |

Inngangur

Samkvæmt 5. gr. laga nr. 45/1987 um staðgreiðslu opinberra gjalda teljast fríðindi og hlunnindi, svo sem fatnaður, fæði, húsnæði og afnot bifreiða, til launa sem reikna skal staðgreiðslu af. Samkvæmt 118. gr. laga nr. 90/2003 um tekju-

skatt skal fjármálaráðherra meta hlunnindi til verðs. Með vísan til ofangreindra lagagreina hefur fjármálaráðherra metið bifreiðahlunnindi, sem veitt verða á árinu 2007, þannig til verðs sem staðgreiðsla reiknast af:

Bifreiðahlunnindi

Full og ótakmörkuð umráð

Láti launagreiðandi starfsmanni sínum í té fólksbifreið, þ.m.t. skutbifreið (station) eða jeppabifreið, eða aðra bifreið sem hægt er að hafa sambærileg not af, til fullra umráða skal meta umráðin starfsmanni til tekna án tillits til notkunar hans á bifreiðinni.

Hafi starfsmaður fleiri en eina bifreið frá launagreiðanda sínum til fullra eða ótakmarkaðra umráða samtímis fyrir sig eða fjölskyldu sína skal reikna starfsmanninum til hlunninda not hans af hverri bifreið fyrir sig.

Ársumráð bifreiðar skulu metin til tekna sem hlutfall af verði þeirra sem hér segir:

| | |
|-------------------------------------------------------------|-----|
| Bifreið sem tekin var í notkun á árunum 2005, 2006 eða 2007 | 20% |
| Bifreið sem tekin var í notkun á árunum 2002, 2003 eða 2004 | 15% |
| Bifreið sem tekin var í notkun á árunum 2001 eða fyrr | 12% |

Ekki skiptir máli hver upphaflegur eigandi bifreiðarinnar var. Bifreið sem flutt var inn notuð telst hafa verið tekin til notkunar á því ári sem hún var framleidd. Mánaðarleg hlunnindi teljast 1/12 af hlunnindum reiknuðum eins og að framan greinir fyrir hvern byrjaðan mánuð og skal við það miðað ef umráðin vara hluta úr ári.

Verð bifreiða eru í þessu sambandi skilgreind í bæklingnum bifreiðaskrá RSK 6.03, sem gefin er út árlega og fæst hjá skattstjórum og ríkisskattstjóra www.rsk.is. Verð bifreiðar skal ætíð miða við staðgreiðsluverð samkvæmt verðlista á nýrri bifreið frá bifreiðaumboði ár hvert með breytingum í samræmi við verðlagsbreytingar á milli ára. Sé bifreið eigi til sölu og eigi unnt að fá upp-

lýsingar um verð á henni skal miða við verð á sambærilegum bifreiðum.

Hafi launagreiðandi bifreið á rekstrarleigu eða leigu og láti launþega hana í té til umráða skulu afnot af henni metin launþeganum til tekna á sama hátt og ef bifreiðin væri í eigu launagreiðandans sbr. framangreint.

Greiði launagreiðandi enn fremur rekstrarkostnað bifreiðar sem starfsmaður hans hefur umráð yfir skulu þau hlunnindi metin til verðs sem 6% af verði bifreiðarinnar skv. Bifreiðaskrá RSK. Skatthlutföllin eru þá 26%, 21% og 18%.

Greiði launamaður launagreiðanda sínum fyrir afnot og/eða rekstur bifreiðarinnar koma slíkar greiðslur til frádráttar tekjumatinu.

Eigendur fyrirtækja, framkvæmdastjórar þeirra og aðrir í sambærilegum störfum sem og stjórnarmenn félaga teljast ætíð hafa full og ótakmörkuð umráð yfir þeim fólksbifreiðum sem þeim eru látnar í té og þeir hafa til einkanota.

Takmörkuð afnot

Hafi starfsmaður haft afnot af bifreið launagreiðanda síns og honum er einungis heimilt að nota hana utan vinnutíma til aksturs milli heimilis og vinnustaðar og til einstakra tilfallandi afnota telst hann hafa takmörkuð afnot af bifreiðinni, enda sé hún að öðru leyti notuð í daglegum rekstri launagreiðanda. Takmörkuð afnot skulu metin til tekna miðað við 68 kr. á hvern ekinn kílómetra. Gögn um takmörkuð afnot skulu greinilega færð og vera aðgengileg skattyfirvöldum hvort sem er í bókhaldi launagreiðanda eða hjá starfsmanni. Sé um frekari afnot að ræða telst starfsmaður hafa full umráð bifreiðar eins og greint er frá hér að framan.

Dæmi um útreikning á bifreiðahlunnindum

Dæmi 1:

Launamaður hefur full umráð og endurgjaldslaus afnot af bifreið í eigu vinnuveitanda. Um er að ræða fólksbifreið sem tekin var í notkun á árinu 2005. Kostnaðarverð hennar er kr. 2.250.000 samkvæmt bifreiðaskrá 2005. Verðbreytingarstuðull fyrir bifreiðaskrá 2005 er 1,0670 á árinu 2007.

Útreikningur

Tekjur af hlunnindum miðað við heilt ár:
 $2.250.000 \times 26\% \times 1,0670$ kr. 624.195

Mánaðarlegar tekjur af hlunnindum
af hlunnindum 624.195/12 kr. 52.016

Dæmi 2:

Launamaður hefur full umráð yfir fólksbifreið sem er í eigu launagreiðanda hans, en greiðir sjálfur eldsneyti og annan rekstrarkostnað. Um er að ræða bifreið sem tekin var í notkun á árinu 1998. Kostnaðarverð sambærilegrar bifreiðar er kr. 2.350.000 samkvæmt bifreiðaskrá 1998. Þar sem hér er um að ræða bifreið sem tekin var í notkun á árinu 1998 og launamaður greiðir sjálfur rekstrarkostnaðinn ber að meta hlunnindi til tekna sem 12% af kostnaðarverði. Verðbreytingarstuðull fyrir bifreiðaskrá 1998 er 1,2408 á árinu 2007.

Útreikningur

Tekjur af hlunnindum
(Skattstofn) $2.350.000 \times 12\% \times 1,2408$ kr. 349.906

Mánaðarlegar tekjur af hlunnindum
af hlunnindum 349.906/12 kr. 29.159

Dæmi 3:

Launamaður hefur full umráð yfir fólksbifreið sem er í eigu launagreiðanda. Hann greiðir launagreiðanda 15.000 kr. á mánuði fyrir afnotin. Þessar 15.000 krónur dragast frá mánaðarlegum hlunnindum launamannsins. Launagreiðandi greiðir allan kostnað við rekstur bifreiðarinnar. Um er að ræða bifreið sem tekin var í notkun á árinu 2005. Kostnaðarverð hennar er kr. 2.800.000 samkvæmt bifreiðaskrá RSK. Verðbreytingarstuðull fyrir bifreiðaskrá 2005 er 1,0670 á árinu 2007.

Útreikningur

Tekjur af hlunnindum
(Skattstofn)
 $2.800.000 \times 26\% \times 1,0670$ kr. 776.776

Mánaðarlegar tekjur af hlunnindum
 $776.776/12 - 15.000$ kr. 49.731

Dæmi 4:

Launamaður hefur umráðarétt yfir fólksbifreið í eigu launagreiðanda. Um er að ræða fólksbifreið sem tekin var í notkun á árinu 2006. Kostnaðarverð hennar er kr. 2.500.000 samkvæmt bifreiðaskrá 2006. Í dæmi þessu er gert ráð fyrir að heimild launamannsins til akstur bifreiðarinnar sé takmörkuð við ákveðinn kílómetrafjölda, sem er 7.000 km á ári, þannig að hann greiði launagreiðanda sínum fyrir ekna kílómetra umfram það hámark. Samkvæmt reglunum skal reikna launamanninum full mánaðarleg hlunnindi til tekna þar til hámarkinu er náð, þ.e. í þessu tilviki 7.000 kílómetrum. Þegar akstur launamannsins er kominn yfir hámarkið dregur launagreiðandi greiðslu launamannsins frá fjárhæð mánaðarlegra hlunninda (eins og í dæmi 3) og falla þau niður sé greiðsla jafnhá þeim. Verðbreytingarstuðull fyrir bifreiðaskrá 2006 er 1,1119 á árinu 2007.

Útreikningur

Tekjur af hlunnindum (upp að hámarki) $2.500.000 \times 26\% \times 1,1119$ kr. 722.735

- a) Mánaðarleg hlunnindi þar til akstur nær 7.000 km eru 722.735/12 kr. 60.228
- b) Mánaðarleg hlunnindi eftir að akstur nær 7.000 km eru kr. 60.228 mínus greiðsla launamannsins vegna aksturs umfram 7.000 km. Sé mánaðarleg greiðsla launamannsins kr. 60.228 eða hærri telst hann ekki hafa skattskyld hlunnindi af afnotunum.

Tafla fyrir framreikning á verði bifreiða skv. Bifreiðaskrá viðkomandi árs.

| Bifreiðaskrá | Verðbreytingarstuðull |
|--------------|-----------------------|
| 1990 | 1,6235 |
| 1991 | 1,5146 |
| 1992 | 1,4082 |
| 1993 | 1,3877 |
| 1994 | 1,3241 |
| 1995 | 1,3171 |
| 1996 | 1,2924 |
| 1997 | 1,2661 |
| 1998 | 1,2408 |
| 1999 | 1,2609 |
| 2000 | 1,2408 |
| 2001 | 1,2420 |
| 2002 | 1,0847 |
| 2003 | 1,1189 |
| 2004 | 1,0933 |
| 2005 | 1,0670 |
| 2006 | 1,1119 |
| 2007 | 1,0000 |

Bifreiðaskrá 2007

ALFA ROMEO

2 dyra bílar

| | | | | |
|------------------|---------|--------|---------|---------------|
| Brera JTS | 2200 cc | 185 hö | beinsk. | 4.990.000 kr. |
| Brera Sky JTS | 2200 cc | 185 hö | beinsk. | 5.190.000 kr. |
| Brera Sky V6 4x4 | 3200 cc | 260 hö | beinsk. | 5.990.000 kr. |

3 dyra bílar

| | | | | |
|------------------------|---------|--------|----------|---------------|
| GT Classic JTS | 2000 cc | 165 hö | beinsk. | 3.790.000 kr. |
| GT Lusso JTS | 2000 cc | 165 hö | beinsk. | 3.980.000 kr. |
| GT Lusso Selespeed JTS | 2000 cc | 165 hö | sjálfsk. | 4.170.000 kr. |
| GT Lusso V6 | 3200 cc | 240 hö | beinsk. | 4.990.000 kr. |
| 147 Classic TS | 1600 cc | 105 hö | beinsk. | 2.390.000 kr. |
| 147 Super TS | 1600 cc | 120 hö | beinsk. | 2.490.000 kr. |
| 147 Lusso TS | 1600 cc | 120 hö | beinsk. | 2.590.000 kr. |
| 147 Lusso TS | 2000 cc | 150 hö | beinsk. | 2.940.000 kr. |
| 147 Lusso Selesp. | 2000 cc | 150 hö | sjálfsk. | 3.470.000 kr. |
| 147 Lusso JTD | 1900 cc | 150 hö | beinsk. | 3.270.000 kr. |
| 147 GTA Selespeed | 3200 cc | 250 hö | sjálfsk. | 4.875.000 kr. |

4 dyra bílar

| | | | | |
|------------------|---------|--------|---------|---------------|
| 159 Classic JTS | 1900 cc | 160 hö | beinsk. | 3.290.000 kr. |
| 159 Classic JTDm | 1900 cc | 150 hö | beinsk. | 3.490.000 kr. |
| 159 Lusso JTS | 2200 cc | 185 hö | beinsk. | 4.290.000 kr. |
| 159 Lusso JTDm | 2400 cc | 200 hö | beinsk. | 4.690.000 kr. |
| 159 Lusso V6 4x4 | 3200 cc | 260 hö | beinsk. | 5.190.000 kr. |

5 dyra bílar

| | | | | |
|----------------|---------|--------|---------|---------------|
| 147 Classic TS | 1600 cc | 105 hö | beinsk. | 2.490.000 kr. |
| 147 Super TS | 1600 cc | 120 hö | beinsk. | 2.550.000 kr. |
| 147 Lusso TS | 1600 cc | 120 hö | beinsk. | 2.650.000 kr. |
| 147 Lusso TS | 2000 cc | 150 hö | beinsk. | 3.000.000 kr. |
| 147 Lusso JTD | 1900 cc | 150 hö | beinsk. | 3.300.000 kr. |

Skutbílar

| | | | | |
|----------------------------|---------|--------|---------|---------------|
| 159 Classic Sportwagon JTS | 1900 cc | 160 hö | beinsk. | 3.480.000 kr. |
| 159 Classic Sportw. JTDm | 1900 cc | 150 hö | beinsk. | 3.680.000 kr. |
| 159 Lusso Sportwagon JTS | 2200 cc | 185 hö | beinsk. | 4.480.000 kr. |
| 159 Lusso Sportwagon JTDm | 2400 cc | 200 hö | beinsk. | 4.880.000 kr. |
| 159 Lusso Sportw. V6 4x4 | 3200 cc | 260 hö | beinsk. | 5.380.000 kr. |

AUDI

2 dyra bílar

| | | | | |
|-------------------------|---------|--------|----------|---------------|
| TT Coupé TFSI | 2000 cc | 200 hö | sjálfsk. | 5.350.000 kr. |
| TT Coupé FSI V6 quattro | 3200 cc | 250 hö | sjálfsk. | 6.890.000 kr. |

4 dyra bílar

| | | | | |
|-------------------|---------|--------|----------|---------------|
| A4 | 2000 cc | 130 hö | sjálfsk. | 3.770.000 kr. |
| A4 1.8T | 1800 cc | 163 hö | sjálfsk. | 4.190.000 kr. |
| A4 TFSI quattro | 2000 cc | 200 hö | sjálfsk. | 4.790.000 kr. |
| A4 FSI V6 quattro | 3200 cc | 255 hö | sjálfsk. | 6.090.000 kr. |
| A4 TDi | 2000 cc | 140 hö | sjálfsk. | 3.690.000 kr. |
| A6 TFSI | 2000 cc | 170 hö | sjálfsk. | 4.375.000 kr. |
| A6 V6 | 2400 cc | 177 hö | sjálfsk. | 4.895.000 kr. |
| A6 V6 FSI quattro | 3200 cc | 250 hö | sjálfsk. | 6.175.000 kr. |
| A6 V8 FSI quattro | 4200 cc | 355 hö | sjálfsk. | 7.890.000 kr. |
| A6 TDi | 2000 cc | 140 hö | sjálfsk. | 4.580.000 kr. |
| A6 V6 TDi quattro | 3000 cc | 255 hö | sjálfsk. | 6.325.000 kr. |

5 dyra bílar

| | | | | |
|------------------------------|---------|--------|----------|---------------|
| A3 Sportback | 1600 cc | 102 hö | beinsk. | 2.750.000 kr. |
| A3 Sportback | 1600 cc | 102 hö | sjálfsk. | 2.950.000 kr. |
| A3 Sportback FSI | 2000 cc | 150 hö | sjálfsk. | 3.290.000 kr. |
| A3 Sportb. Amb. TFSI quattro | 2000 cc | 200 hö | beinsk. | 3.855.000 kr. |
| A3 Sportb. Amb. TFSI quattro | 3200 cc | 250 hö | sjálfsk. | 5.380.000 kr. |
| A3 Sportback TDi | 2000 cc | 140 hö | sjálfsk. | 3.490.000 kr. |
| A3 Sportback TDi quattro | 2000 cc | 170 hö | beinsk. | 3.690.000 kr. |

Skutbílar

| | | | | |
|-------------------|---------|--------|----------|---------------|
| A4 | 2000 cc | 130 hö | sjálfsk. | 3.925.000 kr. |
| A4 1.8T | 1800 cc | 163 hö | sjálfsk. | 4.345.000 kr. |
| A4 TFSI quattro | 2000 cc | 200 hö | sjálfsk. | 4.945.000 kr. |
| A4 FSI V6 quattro | 3200 cc | 255 hö | sjálfsk. | 6.245.000 kr. |
| A4 TDi | 2000 cc | 140 hö | sjálfsk. | 3.845.000 kr. |
| A6 TFSI | 2000 cc | 170 hö | sjálfsk. | 4.530.000 kr. |
| A6 V6 | 2400 cc | 177 hö | sjálfsk. | 5.050.000 kr. |
| A6 V6 FSI quattro | 3200 cc | 250 hö | sjálfsk. | 6.330.000 kr. |
| A6 V8 FSI quattro | 4200 cc | 355 hö | sjálfsk. | 8.045.000 kr. |
| A6 TDi | 2000 cc | 140 hö | sjálfsk. | 4.735.000 kr. |
| A6 V6 TDi quattro | 3000 cc | 255 hö | sjálfsk. | 6.480.000 kr. |

Jeppar

| | | | | |
|--------|---------|--------|----------|---------------|
| Q7 FSI | 4200 cc | 350 hö | sjálfsk. | 9.190.000 kr. |
|--------|---------|--------|----------|---------------|

BMW

4 dyra bílar

| | | | | |
|------|---------|--------|----------|---------------|
| 318i | 2000 cc | 129 hö | beinsk. | 3.300.000 kr. |
| 318i | 2000 cc | 129 hö | sjálfsk. | 3.587.000 kr. |
| 320i | 2000 cc | 150 hö | beinsk. | 3.520.000 kr. |
| 320i | 2000 cc | 150 hö | sjálfsk. | 3.807.000 kr. |
| 325i | 2500 cc | 218 hö | beinsk. | 4.610.000 kr. |

| | | | | |
|-------|---------|--------|----------|----------------|
| 325XI | 2500 cc | 218 hö | beinsk. | 4.980.000 kr. |
| 330I | 3000 cc | 258 hö | beinsk. | 5.170.000 kr. |
| 330XI | 3000 cc | 258 hö | beinsk. | 5.520.000 kr. |
| 335I | 3000 cc | 306 hö | beinsk. | 5.620.000 kr. |
| 318D | 2000 cc | 122 hö | beinsk. | 3.470.000 kr. |
| 320D | 2000 cc | 163 hö | beinsk. | 3.720.000 kr. |
| 325D | 3000 cc | 197 hö | beinsk. | 4.280.000 kr. |
| 330D | 3000 cc | 231 hö | beinsk. | 5.180.000 kr. |
| 330XD | 3000 cc | 231 hö | beinsk. | 5.580.000 kr. |
| 335D | 3000 cc | 286 hö | beinsk. | 5.830.000 kr. |
| 523I | 2500 cc | 177 hö | beinsk. | 4.980.000 kr. |
| 523I | 2500 cc | 177 hö | sjálfsk. | 5.274.000 kr. |
| 525I | 2500 cc | 218 hö | beinsk. | 5.300.000 kr. |
| 525IX | 2500 cc | 218 hö | beinsk. | 5.870.000 kr. |
| 530I | 3000 cc | 258 hö | beinsk. | 5.990.000 kr. |
| 530IX | 3000 cc | 258 hö | beinsk. | 6.370.000 kr. |
| 540I | 4000 cc | 306 hö | beinsk. | 6.890.000 kr. |
| 550I | 5000 cc | 367 hö | beinsk. | 8.200.000 kr. |
| 520D | 2000 cc | 163 hö | beinsk. | 4.680.000 kr. |
| 525D | 2500 cc | 177 hö | beinsk. | 5.680.000 kr. |
| 530D | 3000 cc | 218 hö | beinsk. | 6.280.000 kr. |
| 530XD | 3000 cc | 218 hö | beinsk. | 6.680.000 kr. |
| 535D | 3000 cc | 272 hö | beinsk. | 7.180.000 kr. |
| 730I | 3000 cc | 250 hö | sjálfsk. | 8.600.000 kr. |
| 740I | 4000 cc | 306 hö | sjálfsk. | 9.120.000 kr. |
| 730D | 3000 cc | 231 hö | sjálfsk. | 8.300.000 kr. |
| M5 | 5000 cc | 507 hö | SMG | 13.500.000 kr. |
| M6 | 5000 cc | 507 hö | SMG | 14.900.000 kr. |

5 dyra bílar

| | | | | |
|------|---------|--------|----------|---------------|
| 116I | 1600 cc | 115 hö | beinsk. | 2.650.000 kr. |
| 118I | 2000 cc | 129 hö | beinsk. | 2.830.000 kr. |
| 118I | 2000 cc | 129 hö | sjálfsk. | 3.117.000 kr. |
| 120I | 2000 cc | 150 hö | beinsk. | 3.020.000 kr. |
| 120I | 2000 cc | 150 hö | sjálfsk. | 3.307.000 kr. |
| 118D | 2000 cc | 122 hö | beinsk. | 2.910.000 kr. |
| 120D | 2000 cc | 163 hö | beinsk. | 3.130.000 kr. |

Jeppar

| | | | | |
|----------|---------|--------|----------|---------------|
| X3 2.0d | 2000 cc | 150 hö | beinsk. | 4.490.000 kr. |
| X3 2.5si | 2500 cc | 218 hö | sjálfsk. | 5.490.000 kr. |
| X3 2.0 | 2000 cc | 150 hö | beinsk. | 4.140.000 kr. |
| X5 3.0 | 3000 cc | 231 hö | beinsk. | 6.400.000 kr. |
| X5 3.0 | 3000 cc | 231 hö | sjálfsk. | 6.700.000 kr. |
| X5 3.0D | 3000 cc | 218 hö | beinsk. | 6.600.000 kr. |
| X5 3.0D | 3000 cc | 218 hö | sjálfsk. | 6.900.000 kr. |

CHEVROLET

3 dyra bílar

| | | | | |
|----------|---------|-------|---------|---------------|
| Kalos GT | 1400 cc | 94 hö | beinsk. | 1.559.000 kr. |
|----------|---------|-------|---------|---------------|

4 dyra bílar

| | | | | |
|-------------------|---------|--------|----------|---------------|
| Tosca Executive | 2000 cc | 144 hö | sjálfsk. | 3.030.000 kr. |
| Lacetti CDX Sedan | 1800 cc | 122 hö | beinsk. | 1.799.000 kr. |
| Lacetti CDX Sedan | 1800 cc | 122 hö | sjálfsk. | 1.989.000 kr. |
| Aveo | 1400 cc | 94 hö | beinsk. | 1.499.000 kr. |
| Aveo | 1400 cc | 94 hö | sjálfsk. | 1.689.000 kr. |

5 dyra bílar

| | | | | |
|-------------------|---------|--------|----------|---------------|
| Kalos SE | 1400 cc | 94 hö | beinsk. | 1.389.000 kr. |
| Kalos SE | 1400 cc | 94 hö | sjálfsk. | 1.579.000 kr. |
| Lacetti CDX Sport | 1800 cc | 122 hö | beinsk. | 1.699.000 kr. |
| Lacetti CDX Sport | 1800 cc | 122 hö | sjálfsk. | 1.889.000 kr. |

Skutbílar

| | | | | |
|---------------------|---------|--------|----------|---------------|
| Lacetti CDX Station | 1800 cc | 122 hö | beinsk. | 1.899.000 kr. |
| Lacetti CDX Station | 1800 cc | 122 hö | sjálfsk. | 2.089.000 kr. |

Jeppar

| | | | | |
|---------|---------|--------|----------|---------------|
| Captiva | 2000 cc | 150 hö | beinsk. | 3.550.000 kr. |
| Captiva | 2000 cc | 150 hö | sjálfsk. | 3.785.000 kr. |

CITROEN

3 dyra bílar

| | | | | |
|--------------|---------|--------|----------|---------------|
| C1 SX WTi | 1000 cc | 68 hö | beinsk. | 1.395.000 kr. |
| C4 Coupé VTR | 1600 cc | 110 hö | beinsk. | 1.919.000 kr. |
| C4 Coupé VTR | 1600 cc | 110 hö | sjálfsk. | 2.039.000 kr. |
| C4 Coupé VTS | 2000 cc | 180 hö | beinsk. | 2.649.000 kr. |
| C2 SX | 1400 cc | 75 hö | beinsk. | 1.569.000 kr. |
| C2 VTR | 1400 cc | 75 hö | beinsk. | 1.619.000 kr. |
| C2 VTR | 1400 cc | 75 hö | sjálfsk. | 1.669.000 kr. |
| C2 VTR | 1600 cc | 110 hö | sjálfsk. | 1.759.000 kr. |
| C2 VTS | 1600 cc | 125 hö | beinsk. | 1.849.000 kr. |

5 dyra bílar

| | | | | |
|----------------------|---------|--------|----------|---------------|
| C1 SX WTi | 1000 cc | 68 hö | beinsk. | 1.435.000 kr. |
| C3 SX | 1400 cc | 75 hö | beinsk. | 1.629.000 kr. |
| C3 SX | 1600 cc | 110 hö | beinsk. | 1.689.000 kr. |
| C3 SX | 1600 cc | 110 hö | sjálfsk. | 1.789.000 kr. |
| C3 SX HDi | 1400 cc | 70 hö | beinsk. | 1.799.000 kr. |
| C4 Saloon SX | 1600 cc | 110 hö | beinsk. | 1.949.000 kr. |
| C4 Saloon SX | 1600 cc | 110 hö | sjálfsk. | 2.069.000 kr. |
| C4 Saloon SX Comfort | 1600 cc | 110 hö | beinsk. | 2.039.000 kr. |
| C4 Saloon SX Comfort | 1600 cc | 110 hö | sjálfsk. | 2.159.000 kr. |

| | | | | |
|--------------------------|---------|--------|----------|---------------|
| C4 Saloon SX Comfort | 2000 cc | 143 hö | sjálfsk. | 2.379.000 kr. |
| C4 Saloon SX HDi | 1600 cc | 110 hö | beinsk. | 2.329.000 kr. |
| C4 Saloon SX Comfort HDi | 1600 cc | 110 hö | beinsk. | 2.419.000 kr. |
| Xsara Picasso SX | 1600 cc | 110 hö | beinsk. | 2.049.000 kr. |
| Xsara Picasso Exclusive | 1600 cc | 110 hö | beinsk. | 2.139.000 kr. |
| Xsara Picasso Exclusive | 2000 cc | 137 hö | sjálfsk. | 2.399.000 kr. |
| C5 X | 1800 cc | 117 hö | beinsk. | 2.219.000 kr. |
| C5 SX | 2000 cc | 143 hö | beinsk. | 2.399.000 kr. |
| C5 SX | 2000 cc | 143 hö | sjálfsk. | 2.549.000 kr. |
| C5 X HDi | 1600 cc | 110 hö | beinsk. | 2.519.000 kr. |
| C5 SX HDi | 2000 cc | 138 hö | beinsk. | 2.949.000 kr. |
| C5 SX HDi | 2000 cc | 138 hö | sjálfsk. | 3.099.000 kr. |
| C5 Exclusive | 3000 cc | 210 hö | sjálfsk. | 3.689.000 kr. |
| C8 X | 2000 cc | 143 hö | beinsk. | 3.199.000 kr. |
| C8 SX | 2000 cc | 143 hö | beinsk. | 3.339.000 kr. |
| C8 SX | 2000 cc | 143 hö | sjálfsk. | 3.489.000 kr. |
| Berlingo SX 6 dyra | 1400 cc | 75 hö | beinsk. | 1.669.000 kr. |
| Berlingo Multispace | 1400 cc | 75 hö | beinsk. | 1.669.000 kr. |
| Berlingo Multispace | 1600 cc | 110 hö | beinsk. | 1.739.000 kr. |
| Berlingo Multispace HDi | 1600 cc | 90 hö | beinsk. | 1.889.000 kr. |

Skutbílur

| | | | | |
|-----------|---------|--------|----------|---------------|
| C5 SX | 2000 cc | 143 hö | beinsk. | 2.549.000 kr. |
| C5 SX | 2000 cc | 143 hö | sjálfsk. | 2.699.000 kr. |
| C5 X HDi | 1600 cc | 110 hö | beinsk. | 2.669.000 kr. |
| C5 SX HDi | 2000 cc | 138 hö | beinsk. | 3.099.000 kr. |

Sendibílur

| | | | | |
|------------------|---------|-------|---------|---------------|
| Berlingo Van | 1400 cc | 75 hö | beinsk. | 1.555.000 kr. |
| Berlingo Van HDi | 2000 cc | 90 hö | beinsk. | 1.740.000 kr. |

FIAT

3 dyra bílar

| | | | | |
|---------------------------|---------|--------|---------|---------------|
| Grande Punto Active | 1200 cc | 65 hö | beinsk. | 1.590.000 kr. |
| Grande Punto Active | 1200 cc | 77 hö | beinsk. | 1.640.000 kr. |
| Grande Punto Active JTD75 | 1300 cc | 75 hö | beinsk. | 1.890.000 kr. |
| Grande Punto Dynamic | 1200 cc | 65 hö | beinsk. | 1.640.000 kr. |
| Grande Punto Dynamic | 1400 cc | 77 hö | beinsk. | 1.690.000 kr. |
| Grande Punto Sport | 1400 cc | 95 hö | beinsk. | 1.890.000 kr. |
| Grande Punto Sport JTD130 | 1900 cc | 130 hö | beinsk. | 2.290.000 kr. |

5 dyra bílar

| | | | | |
|--------------------|---------|-------|----------|---------------|
| Panda Ciao | 1200 cc | 60 hö | beinsk. | 1.290.000 kr. |
| Panda Dynamic | 1200 cc | 60 hö | beinsk. | 1.390.000 kr. |
| Panda Dynamic | 1200 cc | 60 hö | sjálfsk. | 1.530.000 kr. |
| Panda Dynamic JTD | 1300 cc | 70 hö | beinsk. | 1.690.000 kr. |
| Panda Dynamic JTD | 1300 cc | 70 hö | sjálfsk. | 1.830.000 kr. |
| Panda 4x4 Climbing | 1200 cc | 60 hö | beinsk. | 1.790.000 kr. |

| | | | | |
|---------------------------|---------|--------|----------|---------------|
| Grande Punto Active | 1200 cc | 65 hö | beinsk. | 1.590.000 kr. |
| Grande Punto Active | 1200 cc | 77 hö | beinsk. | 1.690.000 kr. |
| Grande Punto Active JTD75 | 1300 cc | 75 hö | beinsk. | 1.940.000 kr. |
| Grande Punto Dynamic | 1200 cc | 65 hö | beinsk. | 1.690.000 kr. |
| Grande Punto Dynamic | 1400 cc | 77 hö | beinsk. | 1.740.000 kr. |
| Grande Punto Dynamic | 1400 cc | 95 hö | beinsk. | 1.890.000 kr. |
| Multipla Active | 1600 cc | 103 hö | beinsk. | 2.340.000 kr. |
| Multipla Active JTD | 1900 cc | 120 hö | beinsk. | 2.740.000 kr. |
| Multipla Dynamic | 1600 cc | 103 hö | beinsk. | 2.490.000 kr. |
| Multipla Dynamic JTD | 1900 cc | 120 hö | beinsk. | 2.890.000 kr. |
| Croma Active | 1800 cc | 140 hö | beinsk. | 2.790.000 kr. |
| Croma Active | 2200 cc | 147 hö | beinsk. | 3.290.000 kr. |
| Croma Dynamic | 2200 cc | 147 hö | beinsk. | 3.460.000 kr. |
| Croma Dynamic JTD | 1900 cc | 150 hö | beinsk. | 3.350.000 kr. |
| Croma Emotion JTD | 1900 cc | 150 hö | sjálfsk. | 3.690.000 kr. |
| Croma Emotion JTD | 2400 cc | 200 hö | sjálfsk. | 4.440.000 kr. |

FORD

2 dyra bílar

| | | | | |
|----------------------------|---------|--------|----------|---------------|
| Mustang Standard Coupe V6 | 4000 cc | 210 hö | beinsk. | 3.170.000 kr. |
| Mustang Standard Coupe V6 | 4000 cc | 210 hö | sjálfsk. | 3.320.000 kr. |
| Mustang Premium Coupe V6 | 4000 cc | 210 hö | beinsk. | 3.340.000 kr. |
| Mustang Premium Coupe V6 | 4000 cc | 210 hö | sjálfsk. | 3.490.000 kr. |
| Mustang Deluxe Coupe V6 | 4000 cc | 210 hö | beinsk. | 3.240.000 kr. |
| Mustang Deluxe Coupe V6 | 4000 cc | 210 hö | sjálfsk. | 3.390.000 kr. |
| Mustang Deluxe Coupe V8 | 4600 cc | 300 hö | beinsk. | 4.040.000 kr. |
| Mustang Deluxe Coupe V8 | 4600 cc | 300 hö | sjálfsk. | 4.190.000 kr. |
| Mustang Premium Coupe V8 | 4600 cc | 300 hö | beinsk. | 4.240.000 kr. |
| Mustang Premium Coupe V8 | 4600 cc | 300 hö | sjálfsk. | 4.390.000 kr. |
| Mustang Standard Conv. V6 | 4000 cc | 210 hö | beinsk. | 3.650.000 kr. |
| Mustang Standard Conv. V6 | 4000 cc | 210 hö | sjálfsk. | 3.800.000 kr. |
| Mustang Premium Conv. V6 | 4000 cc | 210 hö | beinsk. | 3.820.000 kr. |
| Mustang Premium Conv. V6 | 4000 cc | 210 hö | sjálfsk. | 3.970.000 kr. |
| Mustang De Luxe Conv. V6 | 4000 cc | 210 hö | beinsk. | 3.720.000 kr. |
| Mustang De Luxe Conv. V6 | 4000 cc | 210 hö | sjálfsk. | 3.870.000 kr. |
| Mustang GT Deluxe Conv. V8 | 4600 cc | 300 hö | beinsk. | 4.520.000 kr. |
| Mustang GT Deluxe Conv. V8 | 4600 cc | 300 hö | sjálfsk. | 4.670.000 kr. |
| Mustang GT Prem. Conv. V8 | 4600 cc | 300 hö | beinsk. | 4.720.000 kr. |
| Mustang GT Prem. Conv. V8 | 4600 cc | 300 hö | sjálfsk. | 4.870.000 kr. |

3 dyra bílar

| | | | | |
|-------------------|---------|--------|----------|---------------|
| Fiesta Ambiente | 1300 cc | 70 hö | beinsk. | 1.535.000 kr. |
| Fiesta Trend | 1400 cc | 80 hö | beinsk. | 1.600.000 kr. |
| Fiesta Trend | 1600 cc | 100 hö | beinsk. | 1.660.000 kr. |
| Fiesta Trend | 1600 cc | 100 hö | sjálfsk. | 1.760.000 kr. |
| Fiesta Trend TDCi | 1400 cc | 68 hö | beinsk. | 1.760.000 kr. |
| Fiesta Ghia | 1400 cc | 80 hö | beinsk. | 1.690.000 kr. |
| Fiesta Ghia | 1600 cc | 100 hö | beinsk. | 1.750.000 kr. |

| | | | | | | | | | |
|--------------------------|---------|--------|----------|---------------|------------------------|---------|--------|----------|---------------|
| Fiesta Ghia | 1600 cc | 100 hö | sjálfsk. | 1.850.000 kr. | Fusion Fusion + TDCi | 1600 cc | 90 hö | beinsk. | 2.090.000 kr. |
| Fiesta ST150 | 2000 cc | 150 hö | beinsk. | 1.990.000 kr. | Fusion Fusion + TDCi | 1400 cc | 68 hö | beinsk. | 2.010.000 kr. |
| Focus ST | 2500 cc | 225 hö | beinsk. | 3.390.000 kr. | Focus Ambiente | 1400 cc | 80 hö | beinsk. | 1.930.000 kr. |
| 4 dyra bílar | | | | | Focus Ambiente | 1600 cc | 100 hö | beinsk. | 2.030.000 kr. |
| Focus Trend | 1600 cc | 100 hö | beinsk. | 2.090.000 kr. | Focus Ambiente | 1600 cc | 100 hö | sjálfsk. | 2.130.000 kr. |
| Focus Trend | 1600 cc | 100 hö | sjálfsk. | 2.190.000 kr. | Focus Trend | 1600 cc | 100 hö | beinsk. | 2.090.000 kr. |
| Focus Trend TDCi | 1600 cc | 109 hö | beinsk. | 2.490.000 kr. | Focus Trend | 1600 cc | 100 hö | sjálfsk. | 2.190.000 kr. |
| Focus Trend TDCi | 1600 cc | 109 hö | sjálfsk. | 2.590.000 kr. | Focus Trend Plus | 1600 cc | 100 hö | beinsk. | 2.130.000 kr. |
| Focus Ghia | 1600 cc | 115 hö | beinsk. | 2.290.000 kr. | Focus Trend Plus | 1600 cc | 100 hö | sjálfsk. | 2.230.000 kr. |
| Focus Ghia | 1600 cc | 115 hö | sjálfsk. | 2.390.000 kr. | Focus Trend TDCi | 1600 cc | 109 hö | beinsk. | 2.490.000 kr. |
| Focus Ghia | 2000 cc | 145 hö | beinsk. | 2.590.000 kr. | Focus Trend TDCi | 1600 cc | 109 hö | sjálfsk. | 2.590.000 kr. |
| Focus Ghia | 2000 cc | 145 hö | sjálfsk. | 2.690.000 kr. | Focus Ghia | 1600 cc | 115 hö | beinsk. | 2.290.000 kr. |
| Focus Ghia TDCi | 1600 cc | 109 hö | beinsk. | 2.690.000 kr. | Focus Ghia | 2000 cc | 145 hö | beinsk. | 2.590.000 kr. |
| Focus Ghia TDCi | 1600 cc | 109 hö | sjálfsk. | 2.790.000 kr. | Focus Ghia | 1600 cc | 115 hö | sjálfsk. | 2.390.000 kr. |
| Mondeo Trend Plus | 1800 cc | 125 hö | beinsk. | 2.290.000 kr. | Focus Ghia | 2000 cc | 145 hö | sjálfsk. | 2.690.000 kr. |
| Mondeo Trend Plus | 2000 cc | 145 hö | beinsk. | 2.350.000 kr. | Focus Ghia TDCi | 1600 cc | 109 hö | beinsk. | 2.690.000 kr. |
| Mondeo Trend Plus | 2000 cc | 145 hö | sjálfsk. | 2.490.000 kr. | Focus Ghia TDCi | 1600 cc | 109 hö | sjálfsk. | 2.790.000 kr. |
| Mondeo Trend Plus V6 24v | 2500 cc | 170 hö | beinsk. | 2.935.000 kr. | Focus ST | 2500 cc | 225 hö | beinsk. | 3.450.000 kr. |
| Mondeo Trend Plus V6 24v | 2500 cc | 170 hö | sjálfsk. | 3.215.000 kr. | Focus C-Max Trend Plus | 1600 cc | 100 hö | beinsk. | 2.090.000 kr. |
| Mondeo Trend Plus TDCi | 2000 cc | 130 hö | beinsk. | 2.675.000 kr. | Focus C-Max Trend Plus | 1800 cc | 120 hö | beinsk. | 2.370.000 kr. |
| Mondeo Ghia | 2000 cc | 145 hö | beinsk. | 2.750.000 kr. | Focus C-Max Trend Plus | 2000 cc | 145 hö | beinsk. | 2.490.000 kr. |
| Mondeo Ghia | 2000 cc | 145 hö | sjálfsk. | 2.890.000 kr. | Focus C-Max Trend Plus | 2000 cc | 145 hö | sjálfsk. | 2.590.000 kr. |
| Mondeo Ghia | 2500 cc | 170 hö | beinsk. | 3.305.000 kr. | Focus C-Max Ghia | 1800 cc | 120 hö | beinsk. | 2.570.000 kr. |
| Mondeo Ghia | 3500 cc | 170 hö | sjálfsk. | 3.585.000 kr. | Focus C-Max Ghia | 2000 cc | 145 hö | beinsk. | 2.690.000 kr. |
| Mondeo Ghia TDCi | 2000 cc | 130 hö | beinsk. | 3.045.000 kr. | Focus C-Max Ghia | 2000 cc | 145 hö | sjálfsk. | 2.790.000 kr. |
| 5 dyra bílar | | | | | Mondeo Trend Plus | 1800 cc | 125 hö | beinsk. | 2.350.000 kr. |
| Fiesta Ambiente | 1300 cc | 70 hö | beinsk. | 1.565.000 kr. | Mondeo Trend Plus | 2000 cc | 145 hö | beinsk. | 2.410.000 kr. |
| Fiesta Trend | 1400 cc | 80 hö | beinsk. | 1.630.000 kr. | Mondeo Trend Plus | 2500 cc | 170 hö | beinsk. | 2.995.000 kr. |
| Fiesta Trend | 1600 cc | 100 hö | beinsk. | 1.690.000 kr. | Mondeo Trend Plus TDCi | 2000 cc | 130 hö | beinsk. | 2.735.000 kr. |
| Fiesta Trend | 1600 cc | 100 hö | sjálfsk. | 1.790.000 kr. | Mondeo Trend Plus | 2000 cc | 145 hö | sjálfsk. | 2.550.000 kr. |
| Fiesta Trend TDCi | 1400 cc | 68 hö | beinsk. | 1.790.000 kr. | Mondeo Trend Plus | 2500 cc | 170 hö | sjálfsk. | 3.275.000 kr. |
| Fiesta Ghia | 1400 cc | 80 hö | beinsk. | 1.720.000 kr. | Mondeo Ghia | 2000 cc | 145 hö | beinsk. | 2.810.000 kr. |
| Fiesta Ghia | 1600 cc | 100 hö | beinsk. | 1.780.000 kr. | Mondeo Ghia | 2000 cc | 145 hö | sjálfsk. | 2.950.000 kr. |
| Fiesta Ghia | 1600 cc | 100 hö | sjálfsk. | 1.880.000 kr. | Mondeo Ghia | 2500 cc | 170 hö | beinsk. | 3.305.000 kr. |
| Fusion Trend | 1400 cc | 80 hö | beinsk. | 1.670.000 kr. | Mondeo Ghia | 2500 cc | 170 hö | sjálfsk. | 3.585.000 kr. |
| Fusion Trend | 1600 cc | 100 hö | beinsk. | 1.750.000 kr. | Mondeo Ghia TDCi | 2000 cc | 130 hö | beinsk. | 3.105.000 kr. |
| Fusion Trend | 1600 cc | 100 hö | sjálfsk. | 1.850.000 kr. | Galaxy Trend | 2000 cc | 115 hö | beinsk. | 2.890.000 kr. |
| Fusion Trend TDCi | 1600 cc | 90 hö | beinsk. | 1.850.000 kr. | Freestyle SE V6 | 3000 cc | 203 hö | sjálfsk. | 4.290.000 kr. |
| Fusion Trend TDCi | 1400 cc | 68 hö | beinsk. | 1.770.000 kr. | Freestyle SEL V6 | 3000 cc | 203 hö | sjálfsk. | 4.370.000 kr. |
| Fusion Elegance | 1400 cc | 80 hö | beinsk. | 1.840.000 kr. | Freestyle Limited V6 | 3000 cc | 203 hö | sjálfsk. | 4.670.000 kr. |
| Fusion Elegance | 1600 cc | 100 hö | beinsk. | 1.920.000 kr. | Skutbílar | | | | |
| Fusion Elegance | 1600 cc | 100 hö | sjálfsk. | 2.020.000 kr. | Focus Ambiente | 1400 cc | 80 hö | beinsk. | 1.990.000 kr. |
| Fusion Elegance TDCi | 1600 cc | 90 hö | beinsk. | 2.020.000 kr. | Focus Ambiente | 1600 cc | 100 hö | beinsk. | 2.090.000 kr. |
| Fusion Elegance TDCi | 1400 cc | 68 hö | beinsk. | 1.920.000 kr. | Focus Ambiente | 1600 cc | 100 hö | sjálfsk. | 2.190.000 kr. |
| Fusion Fusion + | 1400 cc | 80 hö | beinsk. | 1.910.000 kr. | Focus Trend | 1600 cc | 100 hö | beinsk. | 2.150.000 kr. |
| Fusion Fusion + | 1600 cc | 100 hö | beinsk. | 1.990.000 kr. | Focus Trend | 1600 cc | 100 hö | sjálfsk. | 2.250.000 kr. |
| Fusion Fusion + | 1600 cc | 100 hö | sjálfsk. | 2.090.000 kr. | Focus Trend Plus | 1600 cc | 100 hö | beinsk. | 2.190.000 kr. |
| | | | | | Focus Trend Plus | 1600 cc | 100 hö | sjálfsk. | 2.290.000 kr. |

HONDA

2 dyra bílar

| | | | | |
|---------------|---------|--------|---------|---------------|
| S2000 Harptop | 2000 cc | 240 hö | beinsk. | 3.999.000 kr. |
|---------------|---------|--------|---------|---------------|

4 dyra bílar

| | | | | |
|------------------------|---------|--------|----------|---------------|
| Civic LS | 1800 cc | 140 hö | beinsk. | 1.999.000 kr. |
| Civic LS | 1800 cc | 140 hö | sjálfsk. | 2.129.000 kr. |
| Civic ES | 1800 cc | 140 hö | beinsk. | 2.219.000 kr. |
| Civic ES | 1800 cc | 140 hö | sjálfsk. | 2.329.000 kr. |
| Accord Sedan Comfort | 2000 cc | 155 hö | beinsk. | 2.439.000 kr. |
| Accord Sedan Sport | 2000 cc | 155 hö | beinsk. | 2.549.000 kr. |
| Accord Sedan Sport | 2000 cc | 155 hö | sjálfsk. | 2.649.000 kr. |
| Accord Sedan Executive | 2000 cc | 155 hö | sjálfsk. | 3.049.000 kr. |
| Accord Sedan Type-S | 2400 cc | 190 hö | beinsk. | 3.079.000 kr. |
| Accord Sedan Executive | 2400 cc | 190 hö | sjálfsk. | 3.439.000 kr. |

5 dyra bílar

| | | | | |
|---------|---------|-------|----------|---------------|
| Jazz LS | 1400 cc | 83 hö | beinsk. | 1.669.000 kr. |
| Jazz LS | 1400 cc | 83 hö | sjálfsk. | 1.769.000 kr. |

Skutbílar

| | | | | |
|---------------------|---------|--------|----------|---------------|
| Accord Tourer Sport | 2000 cc | 155 hö | sjálfsk. | 2.799.000 kr. |
|---------------------|---------|--------|----------|---------------|

Jeppar

| | | | | |
|----------------|---------|--------|----------|---------------|
| CR-V ES | 2000 cc | 150 hö | beinsk. | 2.890.000 kr. |
| CR-V ES | 2000 cc | 150 hö | sjálfsk. | 2.990.000 kr. |
| CR-V Executive | 2000 cc | 150 hö | sjálfsk. | 3.290.000 kr. |
| CR-ES CDTi | 2200 cc | 150 hö | beinsk. | 3.999.000 kr. |

HYUNDAI

4 dyra bílar

| | | | | |
|---------------|---------|--------|----------|---------------|
| Sonata | 2000 cc | 145 hö | beinsk. | 2.290.000 kr. |
| Sonata | 2000 cc | 145 hö | sjálfsk. | 2.450.000 kr. |
| Sonata diesel | 2000 cc | 140 hö | sjálfsk. | 2.980.000 kr. |
| Sonata | 2400 cc | 160 hö | sjálfsk. | 2.790.000 kr. |

5 dyra bílar

| | | | | |
|-----------------------|---------|--------|----------|---------------|
| Getz | 1100 cc | 66 hö | beinsk. | 1.490.000 kr. |
| Getz | 1400 cc | 96 hö | beinsk. | 1.590.000 kr. |
| Getz | 1400 cc | 96 hö | sjálfsk. | 1.690.000 kr. |
| Getz | 1600cc | 106 hö | beinsk. | 1.660.000 kr. |
| Getz | 1600 cc | 106 hö | sjálfsk. | 1.770.000 kr. |
| Accent | 1600 cc | 104 hö | sjálfsk. | 1.490.000 kr. |
| Matrix | 1600 cc | 107 hö | sjálfsk. | 1.890.000 kr. |
| Trajét | 2000 cc | 140 hö | beinsk. | 2.590.000 kr. |
| Trajét | 2000 cc | 140 hö | sjálfsk. | 2.690.000 kr. |
| Trajét diesel | 2000 cc | 113 hö | sjálfsk. | 2.890.000 kr. |
| Starex 9 manna diesel | 2500 cc | 140 hö | sjálfsk. | 3.370.000 kr. |

Jeppar

| | | | | |
|--------------------------|---------|--------|----------|---------------|
| Terracan TDi | 2900 cc | 163 hö | sjálfsk. | 4.250.000 kr. |
| Terracan TDi | 2900 cc | 163 hö | beinsk. | 3.850.000 kr. |
| Santa Fe II TDi | 2200 cc | 150 hö | beinsk. | 3.710.000 kr. |
| Santa Fe II TDi | 2200 cc | 150 hö | sjálfsk. | 3.910.000 kr. |
| Santa Fe II | 2700 cc | 188 hö | beinsk. | 3.460.000 kr. |
| Santa Fe II | 2700 cc | 188 hö | sjálfsk. | 3.660.000 kr. |
| Tucson 2,0 | 2000 cc | 142 hö | beinsk. | 2.590.000 kr. |
| Tucson 2,7 | 2700 cc | 175 hö | sjálfsk. | 2.990.000 kr. |
| Tucson 2,0 TDi | 2000 cc | 140 hö | beinsk. | 2.970.000 kr. |
| Starex 7 m 4x4 TDi | 2500 cc | 140 hö | beinsk. | 3.590.000 kr. |
| Santa Fe (eldra útl) | 2400 cc | 145 hö | beinsk. | 3.020.000 kr. |
| Santa Fe (eldra útl) | 2700 cc | 173 hö | sjálfsk. | 3.290.000 kr. |
| Santa Fe TDi (eldra útl) | 2000 cc | 125 hö | sjálfsk. | 3.350.000 kr. |

ISUZU

Pallbílar

| | | | | |
|-------------|---------|--------|----------|---------------|
| Isuzu D-Max | 3000 cc | 130 hö | beinsk. | 2.490.000 kr. |
| Isuzu D-Max | 3000 cc | 130 hö | sjálfsk. | 2.590.000 kr. |

KIA

4 dyra bílar

| | | | | |
|-----------|---------|--------|----------|---------------|
| Cerato EX | 2000 cc | 144 hö | sjálfsk. | 1.885.000 kr. |
|-----------|---------|--------|----------|---------------|

5 dyra bílar

| | | | | |
|--------------------|---------|--------|----------|---------------|
| Picanto LX | 1000 cc | 60 hö | beinsk. | 1.195.000 kr. |
| Picanto EX Classic | 1100 cc | 65 hö | sjálfsk. | 1.425.000 kr. |
| Picanto EX Classic | 1100 cc | 65 hö | sjálfsk. | 1.385.000 kr. |
| Rio EX | 1600 cc | 112 hö | beinsk. | 1.738.000 kr. |
| Rio EX | 1600 cc | 112 hö | sjálfsk. | 1.738.000 kr. |
| Rio EX diesel | 1500 cc | 110 hö | beinsk. | 1.758.000 kr. |
| Rio EX Sport | 1600 cc | 112 hö | sjálfsk. | 1.885.000 kr. |
| Cerato LX Wagon | 2000 cc | 144 hö | sjálfsk. | 1.835.000 kr. |
| Opirus EX V6 24v | 3500 cc | 195 hö | sjálfsk. | 3.960.000 kr. |

Jeppar

| | | | | |
|------------------------------|---------|--------|----------|---------------|
| Sportage EX diesel | 2000 cc | 140 hö | beinsk. | 2.790.000 kr. |
| Sportage EX 24v | 2700 cc | 175 hö | sjálfsk. | 2.950.000 kr. |
| Sportage EX 24v Pres. Pack | 2700 cc | 175 hö | sjálfsk. | 3.080.000 kr. |
| Sorento EX diesel | 2500 cc | 170 hö | sjálfsk. | 3.475.000 kr. |
| Sorento EX Classic diesel | 2500 cc | 170 hö | sjálfsk. | 3.975.000 kr. |
| Sorento EX Luxury diesel | 2500 cc | 170 hö | sjálfsk. | 4.175.000 kr. |
| Sorento EX Pres. Pack diesel | 2500 cc | 170 hö | sjálfsk. | 4.275.000 kr. |

Pallbílur

| | | | | |
|-------------------|---------|-------|---------|---------------|
| K-2500 Single Cab | 2500 cc | 94 hö | beinsk. | 1.745.000 kr. |
| K-2500 King Cab | 2500 cc | 94 hö | beinsk. | 1.745.000 kr. |
| K-2500 Double Cab | 2500 cc | 94 hö | beinsk. | 1.835.000 kr. |

LAND ROVER

Jeppar

| | | | | |
|-------------------------|---------|--------|----------|----------------|
| Discovery III TDV6 | 2700 cc | 190 hö | beinsk. | 5.550.000 kr. |
| Discovery III TDV6 | 2700 cc | 190 hö | sjálfsk. | 5.750.000 kr. |
| Discovery III V8 | 4400 cc | 306 hö | sjálfsk. | 7.450.000 kr. |
| Range Rover Sport TDV6 | 2700 cc | 190 hö | sjálfsk. | 7.150.000 kr. |
| Range Rover Sport TDV8 | 3600 cc | 272 hö | sjálfsk. | 8.530.000 kr. |
| Range Rover Sport V8 | 4400 cc | 306 hö | sjálfsk. | 8.970.000 kr. |
| Range Rover Sport V8 SC | 4200 cc | 390 hö | sjálfsk. | 11.170.000 kr. |
| Range Rover TDV8 | 3600 cc | 272 hö | sjálfsk. | 9.800.000 kr. |
| Range Rover V8 | 4400 cc | 306 hö | sjálfsk. | 11.000.000 kr. |
| Range Rover V8 SC | 4200 cc | 400 hö | sjálfsk. | 14.200.000 kr. |

LEXUS

2 dyra bílar

| | | | | |
|-------|---------|--------|----------|---------------|
| SC430 | 4300 cc | 286 hö | sjálfsk. | 8.980.000 kr. |
|-------|---------|--------|----------|---------------|

5 dyra bílar

| | | | | |
|--------------------|---------|--------|----------|----------------|
| IS250 | 2500 cc | 208 hö | beinsk. | 4.350.000 kr. |
| IS250 | 2500 cc | 208 hö | sjálfsk. | 4.550.000 kr. |
| IS250 Sport | 2500 cc | 208 hö | sjálfsk. | 5.420.000 kr. |
| IS250 Luxury | 2500 cc | 208 hö | sjálfsk. | 5.420.000 kr. |
| GS300 | 3000 cc | 249 hö | sjálfsk. | 5.600.000 kr. |
| GS300 EXE | 3000 cc | 249 hö | sjálfsk. | 6.250.000 kr. |
| GS300 Luxury | 3000 cc | 249 hö | sjálfsk. | 6.950.000 kr. |
| GS430 Luxury | 4300 cc | 284 hö | sjálfsk. | 8.150.000 kr. |
| GS450h EXE | 3500 cc | 340 hö | sjálfsk. | 7.200.000 kr. |
| GS450h Luxury | 3500 cc | 340 hö | sjálfsk. | 7.750.000 kr. |
| LS460 | 4600 cc | 380 hö | sjálfsk. | 10.500.000 kr. |
| LS460 EXE | 4600 cc | 380 hö | sjálfsk. | 11.600.000 kr. |
| LS460 President I | 4600 cc | 380 hö | sjálfsk. | 12.100.000 kr. |
| LS460 President II | 4600 cc | 380 hö | sjálfsk. | 12.800.000 kr. |

Jeppar

| | | | | |
|---------------|---------|--------|----------|---------------|
| RX350 | 3500 cc | 275 hö | sjálfsk. | 5.710.000 kr. |
| RX350 EXE | 3500 cc | 275 hö | sjálfsk. | 6.300.000 kr. |
| RX350 Luxury | 3500 cc | 275 hö | sjálfsk. | 7.020.000 kr. |
| RX400h EXE | 3300 cc | 274 hö | sjálfsk. | 6.550.000 kr. |
| RX400h Luxury | 3300 cc | 274 hö | sjálfsk. | 7.200.000 kr. |

LINCOLN

Jeppar

| | | | | |
|-----------------------------|---------|--------|----------|---------------|
| Lincoln Aviator Luxury V8 | 4600 cc | 302 hö | sjálfsk. | 5.565.000 kr. |
| Lincoln Navigator Luxury V8 | 5400 cc | 300 hö | sjálfsk. | 7.185.000 kr. |

Pallbílur

| | | | | |
|--------------------|---------|--------|----------|---------------|
| Lincoln Mark LT V8 | 5400 cc | 300 hö | sjálfsk. | 4.690.000 kr. |
|--------------------|---------|--------|----------|---------------|

MAZDA

2 dyra bílar

| | | | | |
|------------------|---------|--------|---------|---------------|
| Mazda MX 5 Sport | 2000 cc | 160 hö | beinsk. | 3.170.000 kr. |
|------------------|---------|--------|---------|---------------|

4 dyra bílar

| | | | | |
|-----------------------|-------------|--------|----------|---------------|
| Mazda3 Touring | 1600 cc | 105 hö | beinsk. | 1.980.000 kr. |
| Mazda3 Touring Plus | 1600 cc | 105 hö | beinsk. | 2.170.000 kr. |
| Mazda3 Touring Plus | 1600 cc | 105 hö | sjálfsk. | 2.240.000 kr. |
| Mazda3 Sport | 2000 cc | 150 hö | beinsk. | 2.430.000 kr. |
| Mazda6 Touring | 2000 cc | 147 hö | beinsk. | 2.425.000 kr. |
| Mazda6 Touring | 2000 cc | 147 hö | sjálfsk. | 2.525.000 kr. |
| Mazda6 Sport | 2300 cc | 166 hö | sjálfsk. | 2.940.000 kr. |
| Mazda6 Touring diesel | 2000 cc | 143 hö | beinsk. | 2.690.000 kr. |
| Mazda6 MPS AWD | 2300 cc | 260 hö | beinsk. | 3.970.000 kr. |
| Mazda RX 8 High | 1300 Wancel | 231 hö | beinsk. | 3.690.000 kr. |

5 dyra bílar

| | | | | |
|-----------------------|---------|--------|----------|---------------|
| Mazda2 Mirai | 1600 cc | 100 hö | beinsk. | 1.720.000 kr. |
| Mazda3 Touring | 1600 cc | 105 hö | beinsk. | 1.950.000 kr. |
| Mazda3 Touring Plus | 1600 cc | 105 hö | beinsk. | 2.140.000 kr. |
| Mazda3 Sport | 2000 cc | 150 hö | beinsk. | 2.400.000 kr. |
| Mazda5 Touring | 2000 cc | 145 hö | beinsk. | 2.390.000 kr. |
| Mazda5 Touring diesel | 2000 cc | 143 hö | beinsk. | 2.760.000 kr. |
| Mazda6 Touring | 2000 cc | 147 hö | beinsk. | 2.475.000 kr. |
| Mazda6 Touring | 2000 cc | 147 hö | sjálfsk. | 2.575.000 kr. |
| Mazda6 Sport | 2300 cc | 166 hö | sjálfsk. | 2.990.000 kr. |

Skutbílur

| | | | | |
|-----------------------------|---------|--------|----------|---------------|
| Mazda6 Touring Wagon | 2000 cc | 147 hö | beinsk. | 2.525.000 kr. |
| Mazda6 Touring Wagon | 2000 cc | 147 hö | sjálfsk. | 2.625.000 kr. |
| Mazda6 Touring Wagon diesel | 2000 cc | 143 hö | beinsk. | 2.790.000 kr. |

MERCEDES-BENZ

2 dyra bílar

| | | | | |
|-----------|--|--------|----------|----------------|
| CL 500 | | 388 hö | sjálfsk. | 15.793.000 kr. |
| CL 600 | | 517 hö | sjálfsk. | 22.293.000 kr. |
| CL 65 AMG | | 612 hö | sjálfsk. | 28.700.000 kr. |

5 dyra bílar

| | | | |
|-------------|--------|----------|---------------|
| A 160 CDI | 82 hö | sjálfsk. | 3.041.000 kr. |
| A 160 CDI | 82 hö | beinsk. | 2.804.000 kr. |
| A180 CDI | 109 hö | sjálfsk. | 3.267.000 kr. |
| A 180 CDI | 109 hö | beinsk. | 3.030.000 kr. |
| A 200 CDI | 140 hö | sjálfsk. | 3.799.000 kr. |
| A 200 CDI | 140 hö | beinsk. | 3.562.000 kr. |
| A 150 | 95 hö | sjálfsk. | 2.852.000 kr. |
| A 150 | 95 hö | beinsk. | 2.615.000 kr. |
| A 170 | 115 hö | sjálfsk. | 3.078.000 kr. |
| A 170 | 115 hö | beinsk. | 2.841.000 kr. |
| A 200 | 136 hö | sjálfsk. | 3.493.000 kr. |
| A 200 | 136 hö | beinsk. | 3.239.000 kr. |
| A 200 Turbo | 193 hö | sjálfsk. | 4.044.000 kr. |
| A 200 Turbo | 193 hö | beinsk. | 3.791.000 kr. |
| B 180 CDI | 109 hö | sjálfsk. | 3.687.000 kr. |
| B 180 CDI | 109 hö | beinsk. | 3.449.000 kr. |
| B 200 CDI | 140 hö | sjálfsk. | 4.138.000 kr. |
| B 200 CDI | 140 hö | beinsk. | 3.901.000 kr. |
| B 150 | 95 hö | sjálfsk. | 3.271.000 kr. |
| B 150 | 95 hö | beinsk. | 3.034.000 kr. |
| B 170 | 115 hö | sjálfsk. | 3.497.000 kr. |
| B 170 | 115 hö | beinsk. | 3.260.000 kr. |
| B 200 | 136 hö | sjálfsk. | 3.940.000 kr. |
| B 200 | 136 hö | beinsk. | 3.687.000 kr. |
| B 200 Turbo | 193 hö | sjálfsk. | 4.405.000 kr. |
| B 200 Turbo | 193 hö | beinsk. | 4.152.000 kr. |

Skutbílar

| | | | |
|------------------|--------|----------|----------------|
| C 200 CDI | 150 hö | sjálfsk. | 4.807.000 kr. |
| C 200 CDI | 150 hö | beinsk. | 4.502.000 kr. |
| C 220 CDI | 150 hö | sjálfsk. | 5.105.000 kr. |
| C 220 CDI | 150 hö | beinsk. | 4.800.000 kr. |
| C 320 CDI | 224 hö | sjálfsk. | 6.381.000 kr. |
| C 320 CDI | 224 hö | beinsk. | 6.055.000 kr. |
| C 180 Kompressor | 143 hö | sjálfsk. | 4.986.000 kr. |
| C 180 Kompressor | 143 hö | beinsk. | 4.660.000 kr. |
| C 200 Kompressor | 163 hö | sjálfsk. | 5.227.000 kr. |
| C 200 Kompressor | 163 hö | beinsk. | 4.901.000 kr. |
| C 230 V6 | 204 hö | sjálfsk. | 5.520.000 kr. |
| C 230 V6 | 204 hö | beinsk. | 5.194.000 kr. |
| C 280 V6 | 231 hö | sjálfsk. | 5.692.000 kr. |
| C 280 V6 | 231 hö | beinsk. | 5.366.000 kr. |
| C 350 V6 | 272 hö | sjálfsk. | 6.604.000 kr. |
| C 350 V6 | 272 hö | beinsk. | 6.279.000 kr. |
| C 55 AMG | 367 hö | sjálfsk. | 10.160.000 kr. |
| C 55 AMG | 367 hö | beinsk. | 9.835.000 kr. |
| C 280 4Matic | 231 hö | sjálfsk. | 6.312.000 kr. |
| C 280 4Matic | 231 hö | beinsk. | 5.986.000 kr. |
| C 350 4Matic | 231 hö | sjálfsk. | 7.224.000 kr. |

| | | | |
|------------------|--------|----------|----------------|
| C 350 4Matic | 231 hö | beinsk. | 6.899.000 kr. |
| E 200 Kompressor | 184 hö | sjálfsk. | 5.944.000 kr. |
| E 200 Kompressor | 184 hö | beinsk. | 5.639.000 kr. |
| E 280 | 231 hö | sjálfsk. | 6.914.000 kr. |
| E 280 | 231 hö | beinsk. | 6.589.000 kr. |
| E 350 | 272 hö | sjálfsk. | 7.939.000 kr. |
| E 350 | 272 hö | beinsk. | 7.613.000 kr. |
| E 500 | 388 hö | sjálfsk. | 10.074.000 kr. |
| E 500 | 388 hö | beinsk. | 9.749.000 kr. |
| E 63 AMG | 514 hö | sjálfsk. | 14.879.000 kr. |
| E 63 AMG | 514 hö | beinsk. | 14.553.000 kr. |
| E 280 4Matic | 231 hö | sjálfsk. | 7.620.000 kr. |
| E 280 4Matic | 231 hö | beinsk. | 7.295.000 kr. |
| E 350 4Matic | 272 hö | sjálfsk. | 8.283.000 kr. |
| E 350 4Matic | 272 hö | beinsk. | 7.958.000 kr. |
| E 500 4Matic | 388 hö | sjálfsk. | 10.419.000 kr. |
| E 500 4Matic | 388 hö | beinsk. | 10.093.000 kr. |
| E 220 CDI | 170 hö | sjálfsk. | 6.129.000 kr. |
| E 220 CDI | 170 hö | beinsk. | 5.824.000 kr. |
| E 280 CDI | 190 hö | sjálfsk. | 6.992.000 kr. |
| E 280 CDI | 190 hö | beinsk. | 6.666.000 kr. |
| E 320 CDI | 224 hö | sjálfsk. | 7.775.000 kr. |
| E 320 CDI | 224 hö | beinsk. | 7.450.000 kr. |
| E 280 CDI 4Matic | 190 hö | sjálfsk. | 7.801.000 kr. |
| E 280 CDI 4Matic | 190 hö | beinsk. | 7.476.000 kr. |
| E 320 CDI 4Matic | 224 hö | sjálfsk. | 8.223.000 kr. |
| E 320 CDI 4Matic | 224 hö | beinsk. | 7.898.000 kr. |
| R 280 CDI 4Matic | 190 hö | sjálfsk. | 6.851.000 kr. |
| R 320 CDI 4Matic | 224 hö | sjálfsk. | 7.281.000 kr. |
| R 350 4Matic | 272 hö | sjálfsk. | 7.281.000 kr. |
| R 500 4Matic | 306 hö | sjálfsk. | 9.244.000 kr. |
| R 63 AMG 4Matic | 510 hö | sjálfsk. | 13.962.000 kr. |

Jeppar

| | | | |
|---------------------|--------|----------|----------------|
| ML 280 CDI | 190 hö | sjálfsk. | 6.618.000 kr. |
| ML 320 CDI | 224 hö | sjálfsk. | 6.971.000 kr. |
| ML 420 CDI | 306 hö | sjálfsk. | 9.330.000 kr. |
| ML 350 | 272 hö | sjálfsk. | 6.971.000 kr. |
| ML 500 | 306 hö | sjálfsk. | 9.201.000 kr. |
| ML 63 AMG | 510 hö | sjálfsk. | 13.928.000 kr. |
| GL 320 CDI | 224 hö | sjálfsk. | 8.986.000 kr. |
| GL 420 CDI | 306 hö | sjálfsk. | 11.397.000 kr. |
| GL 450 | 340 hö | sjálfsk. | 11.121.000 kr. |
| GL 500 | 388 hö | sjálfsk. | 12.352.000 kr. |
| G 320 CDI | 215 hö | sjálfsk. | 9.026.000 kr. |
| G 320 CDI L | 215 hö | sjálfsk. | 9.706.000 kr. |
| G 500 | 296 hö | sjálfsk. | 11.244.000 kr. |
| G 500 L | 296 hö | sjálfsk. | 11.940.000 kr. |
| G 55 AMG Kompressor | 476 hö | sjálfsk. | 16.397.000 kr. |

MITSUBISHI

4 dyra bílar

| | | | | |
|----------------|---------|-------|----------|---------------|
| Lancer Comfort | 1600 cc | 98 hö | beinsk. | 1.950.000 kr. |
| Lancer Comfort | 1600 cc | 98 hö | sjálfsk. | 2.050.000 kr. |

5 dyra bílar

| | | | | |
|-------------------|---------|--------|----------|---------------|
| Mitsubishi Colt | 1300 cc | 95 hö | beinsk. | 1.640.000 kr. |
| Mitsubishi Colt | 1500 cc | 109 hö | beinsk. | 1.690.000 kr. |
| Mitsubishi Colt | 1500 cc | 109 hö | sjálfsk. | 1.750.000 kr. |
| Grandis | 2400 cc | 165 hö | sjálfsk. | 3.285.000 kr. |
| Outlander Comfort | 2000 cc | 136 hö | beinsk. | 2.570.000 kr. |
| Outlander Sport | 2000 cc | 136 hö | beinsk. | 2.870.000 kr. |
| Outlander Comfort | 2400 cc | 160 hö | sjálfsk. | 2.980.000 kr. |
| Outlander Sport | 2400 cc | 160 hö | sjálfsk. | 3.290.000 kr. |
| Outlander Turbo | 2000 cc | 202 hö | beinsk. | 3.070.000 kr. |

Skutbílar

| | | | | |
|------------------------|---------|-------|----------|---------------|
| Lancer Station Comfort | 1600 cc | 98 hö | beinsk. | 2.050.000 kr. |
| Lancer Station Comfort | 1600 cc | 98 hö | sjálfsk. | 2.150.000 kr. |

Jeppar

| | | | | |
|-------------------------------|---------|--------|----------|---------------|
| Pajero GLX diesel | 2500 cc | 115 hö | beinsk. | 4.520.000 kr. |
| Pajero GLX diesel | 3200 cc | 161 hö | sjálfsk. | 5.140.000 kr. |
| Pajero GLS/Dakar diesel | 3200 cc | 161 hö | sjálfsk. | 5.760.000 kr. |
| Pajero GLS/Dakar | 3500 cc | 202 hö | sjálfsk. | 5.860.000 kr. |
| Pajero Sport diesel | 2500 cc | 115 hö | beinsk. | 3.560.000 kr. |
| Pajero Sport diesel President | 2500 cc | 115 hö | beinsk. | 3.760.000 kr. |
| Pajero Sport V6 | 3000 cc | 177 hö | sjálfsk. | 3.490.000 kr. |
| Pajero Sport V6 President | 3000 cc | 177 hö | sjálfsk. | 3.690.000 kr. |

Pallbílar

| | | | | |
|---------------------|---------|--------|----------|---------------|
| L200 Intense diesel | 2500 cc | 136 hö | beinsk. | 3.050.000 kr. |
| L200 Intense diesel | 2500 cc | 136 hö | sjálfsk. | 3.250.000 kr. |
| L200 Instyle diesel | 2500 cc | 136 hö | beinsk. | 3.390.000 kr. |
| L200 Instyle diesel | 2500 cc | 136 hö | sjálfsk. | 3.590.000 kr. |

NISSAN

5 dyra bílar

| | | | | |
|----------------|---------|--------|----------|---------------|
| Micra Visia MC | 1200 cc | 80 hö | beinsk. | 1.590.000 kr. |
| Micra Visia MC | 1200 cc | 80 hö | sjálfsk. | 1.740.000 kr. |
| Murano 3.5 V6 | 3000 cc | 234 hö | sjálfsk. | 5.490.000 kr. |

Jeppar

| | | | | |
|-------------------|---------|--------|----------|---------------|
| X-Trail Sport | 2000 cc | 140 hö | sjálfsk. | 2.890.000 kr. |
| X-Trail Elegance | 2000 cc | 140 hö | sjálfsk. | 2.990.000 kr. |
| Pathfinder XE dci | 2500 cc | 174 hö | beinsk. | 4.170.000 kr. |
| Pathfinder SE dci | 2500 cc | 174 hö | beinsk. | 4.570.000 kr. |

| | | | | |
|----------------------|---------|--------|----------|---------------|
| Pathfinder SE dci | 2500 cc | 174 hö | sjálfsk. | 4.770.000 kr. |
| Pathfinder LE dci | 2500 cc | 174 hö | sjálfsk. | 5.290.000 kr. |
| Pathfinder LE IT dci | 2500 cc | 174 hö | sjálfsk. | 5.590.000 kr. |
| Pathfinder LE IT V6 | 4000 cc | 270 hö | sjálfsk. | 5.690.000 kr. |
| Patrol Luxury TDi | 3000 cc | 160 hö | beinsk. | 4.590.000 kr. |
| Patrol Luxury TDi | 3000 cc | 160 hö | sjálfsk. | 4.690.000 kr. |
| Patrol Elegance TDi | 3000 cc | 160 hö | beinsk. | 4.890.000 kr. |
| Patrol Elegance TDi | 3000 cc | 160 hö | sjálfsk. | 4.990.000 kr. |

Pallbílar

| | | | | |
|-----------------------------|---------|--------|----------|---------------|
| Double Cab 4 dyra | 2500 cc | 133 hö | beinsk. | 2.390.000 kr. |
| Navara XE King Cab 2 dyra | 2500 cc | 174 hö | beinsk. | 2.890.000 kr. |
| Navara XE Double Cab 4 dyra | 2500 cc | 174 hö | beinsk. | 3.050.000 kr. |
| Navara SE Double Cab 4 dyra | 2500 cc | 174 hö | beinsk. | 3.190.000 kr. |
| Navara SE Double Cab 4 dyra | 2500 cc | 174 hö | sjálfsk. | 3.350.000 kr. |
| Navara LE Double Cab 4 dyra | 2500 cc | 174 hö | sjálfsk. | 3.750.000 kr. |

OPEL

3 dyra bílar

| | | | | |
|-----------|---------|--------|---------|---------------|
| Astra OPC | 2000 cc | 240 hö | beinsk. | 2.590.000 kr. |
|-----------|---------|--------|---------|---------------|

5 dyra bílar

| | | | | |
|-----------------------|---------|--------|----------|---------------|
| Astra Enjoy Hatchback | 1600 cc | 105 hö | beinsk. | 1.890.000 kr. |
| Astra Enjoy Hatchback | 1800 cc | 125 hö | sjálfsk. | 2.120.000 kr. |
| Vectra Comfort | 1800 cc | 125 hö | beinsk. | 2.250.000 kr. |
| Vectra Elegance CDTI | 1900 cc | 150 hö | sjálfsk. | 2.890.000 kr. |
| Vectra Elegance | 2200 cc | 155 hö | sjálfsk. | 2.730.000 kr. |
| Vectra OPC V6 | 2800 cc | 255 hö | beinsk. | 3.510.000 kr. |
| Zafira Enjoy | 1800 cc | 140 hö | beinsk. | 2.690.000 kr. |
| Zafira Turbo-OPC | 2000 cc | 240 hö | beinsk. | 3.340.000 kr. |

Sendibílar

| | | | | |
|-----------------------|---------|-------|---------|---------------|
| Combo diesel - 6 dyra | 1300 cc | 75 hö | beinsk. | 1.760.000 kr. |
|-----------------------|---------|-------|---------|---------------|

PEUGEOT

2 dyra bílar

| | | | | |
|------------------------|---------|--------|----------|---------------|
| 407 Coupe Sport V6 | 3000 cc | 210 hö | sjálfsk. | 4.850.000 kr. |
| 407 Coupe Sport V6 HDi | 2700 cc | 204 hö | sjálfsk. | 5.100.000 kr. |

3 dyra bílar

| | | | | |
|---------------|---------|--------|----------|---------------|
| 1007 City | 1400 cc | 75 hö | beinsk. | 1.779.000 kr. |
| 1007 City HDi | 1400 cc | 75 hö | beinsk. | 1.919.000 kr. |
| 1007 Dolce | 1400 cc | 75 hö | sjálfsk. | 1.935.000 kr. |
| 1007 Sporty | 1400 cc | 110 hö | sjálfsk. | 1.999.000 kr. |
| 207 XR Plus | 1400 cc | 75 hö | beinsk. | 1.599.000 kr. |
| 206 XR HDi | 1400 cc | 70 hö | beinsk. | 1.699.000 kr. |

| | | | | |
|--------------|---------|--------|---------|---------------|
| 207 XR HDi | 1600 cc | 109 hö | beinsk. | 1.759.000 kr. |
| 207 S16 | 1600 cc | 110 hö | beinsk. | 1.699.000 kr. |
| 207 S16 HDi | 1600 cc | 109 hö | beinsk. | 1.949.000 kr. |
| 207 GT Turbo | 1600 cc | 150 hö | beinsk. | 2.275.000 kr. |

4 dyra bilar

| | | | | |
|------------|---------|--------|----------|---------------|
| 407 XR | 1800 cc | 116 hö | beinsk. | 2.379.000 kr. |
| 407 XR HDi | 1600 cc | 109 hö | beinsk. | 2.539.000 kr. |
| 407 XR | 2000 cc | 136 hö | själfsk. | 2.649.000 kr. |
| 407 XT HDi | 2000 cc | 136 hö | själfsk. | 3.129.000 kr. |
| 407 XT V6 | 3000 cc | 211 hö | själfsk. | 3.449.000 kr. |
| 607 V6 | 3000 cc | 210 hö | själfsk. | 4.649.000 kr. |
| 607 V6 HDi | 2700 cc | 204 hö | själfsk. | 5.179.000 kr. |

5 dyra bilar

| | | | | |
|---------------------------|---------|--------|----------|---------------|
| 107 Trendy | 1000 cc | 68 hö | beinsk. | 1.355.000 kr. |
| 107 Trendy | 1000 cc | 68 hö | själfsk. | 1.459.000 kr. |
| 107 Trendy HDi | 1400 cc | 70 hö | beinsk. | 1.549.000 kr. |
| 206 X-line | 1400 cc | 75 hö | beinsk. | 1.559.000 kr. |
| 206 S-line | 1400 cc | 75 hö | beinsk. | 1.664.000 kr. |
| 206 X-line HDi | 1400 cc | 70 hö | beinsk. | 1.620.000 kr. |
| 206 S-line | 1600 cc | 110 hö | beinsk. | 1.739.000 kr. |
| 206 S-line | 1600 cc | 110 hö | själfsk. | 1.845.000 kr. |
| 207 XR Plus | 1400 cc | 75 hö | beinsk. | 1.629.000 kr. |
| 206 XR HDi | 1400 cc | 70 hö | beinsk. | 1.699.000 kr. |
| 207 XR Plus HDi | 1400 cc | 70 hö | beinsk. | 1.799.000 kr. |
| 207 S16 | 1600 cc | 110 hö | beinsk. | 1.755.000 kr. |
| 207 S16 HDi | 1600 cc | 109 hö | beinsk. | 1.999.000 kr. |
| 307 Performance | 1400 cc | 88 hö | beinsk. | 1.885.000 kr. |
| 307 Performance | 1600 cc | 110 hö | beinsk. | 2.035.000 kr. |
| 307 Performance | 1600 cc | 110 hö | själfsk. | 2.149.000 kr. |
| 307 Performance HDi | 1600 cc | 110 hö | beinsk. | 2.329.000 kr. |
| 307 Griffe | 2000 cc | 140 hö | beinsk. | 2.539.000 kr. |
| Partner Combispace XR | 1400 cc | 75 hö | beinsk. | 1.589.000 kr. |
| Partner Combispace XT | 1600 cc | 110 hö | beinsk. | 1.769.000 kr. |
| Partner Combispace XT HDi | 1600 cc | 90 hö | beinsk. | 1.896.000 kr. |

Skutbilar

| | | | | |
|-----------------------------|---------|--------|----------|---------------|
| 307 Station Performance | 1600 cc | 110 hö | beinsk. | 2.119.000 kr. |
| 307 Station Performance HDi | 1600 cc | 90 hö | beinsk. | 2.249.000 kr. |
| 307 Station Performance HDi | 1600 cc | 110 hö | beinsk. | 2.399.000 kr. |
| 307 SW Performance | 1600 cc | 110 hö | beinsk. | 2.256.000 kr. |
| 307 SW Performance HDi | 1600 cc | 110 hö | beinsk. | 2.499.000 kr. |
| 307 SW Performance | 2000 cc | 140 hö | själfsk. | 2.549.000 kr. |
| 307 SW Performance HDi | 2000 cc | 138 hö | beinsk. | 2.689.000 kr. |
| 407 SW XR HDi | 1600 cc | 109 hö | beinsk. | 2.699.000 kr. |
| 407 SW XR | 2000 cc | 136 hö | själfsk. | 2.799.000 kr. |
| 407 SW XT HDi | 2000 cc | 136 hö | själfsk. | 3.289.000 kr. |
| 408 SW XT V6 | 3000 cc | 211 hö | själfsk. | 3.645.000 kr. |
| 807 HDi | 2000 cc | 136 hö | själfsk. | 3.765.000 kr. |

Sendibilar

| | | | | |
|------------------------------|---------|--------|---------|---------------|
| Partner Van | 1400 cc | 75 hö | beinsk. | 1.525.000 kr. |
| Partner Van m/giraffa glugga | 1400 cc | 75 hö | beinsk. | 1.579.000 kr. |
| Partner Van HDi | 1600 cc | 90 hö | beinsk. | 1.739.000 kr. |
| Expert Van HDi | 2000 cc | 110 hö | beinsk. | 2.119.000 kr. |
| Expert Van HDi extra langur | 2000 cc | 110 hö | beinsk. | 2.225.000 kr. |

PORSCHE

2 dyra bilar

| | | | | |
|---------------------------|---------|--------|----------|----------------|
| Boxster | 2700 cc | 240 hö | beinsk. | 6.036.000 kr. |
| Boxster | 2700 cc | 240 hö | själfsk. | 6.483.000 kr. |
| Boxster S | 3200 cc | 280 hö | beinsk. | 7.254.000 kr. |
| Boxster S | 3200 cc | 280 hö | själfsk. | 7.701.000 kr. |
| Cayman | 2700 cc | 245 hö | beinsk. | 6.529.000 kr. |
| Cayman | 2700 cc | 245 hö | själfsk. | 6.976.000 kr. |
| Cayman S | 3400 cc | 295 hö | beinsk. | 7.988.000 kr. |
| Cayman S | 3400 cc | 295 hö | själfsk. | 8.435.000 kr. |
| 911 Carrera 2 | 3600 cc | 325 hö | beinsk. | 10.433.000 kr. |
| 911 Carrera 2 | 3600 cc | 325 hö | själfsk. | 10.931.000 kr. |
| 911 Carrera 2 S Coupe | 3800 cc | 355 hö | beinsk. | 11.791.000 kr. |
| 911 Carrera 2 S Coupe | 3800 cc | 355 hö | själfsk. | 12.289.000 kr. |
| 911 Carrera 2 S Cabriolet | 3800 cc | 355 hö | beinsk. | 13.150.000 kr. |
| 911 Carrera 2 S Cabriolet | 3800 cc | 355 hö | själfsk. | 13.648.000 kr. |
| 911 Carrera 4 S Coupe | 3800 cc | 355 hö | beinsk. | 12.576.000 kr. |
| 911 Carrera 4 S Coupe | 3800 cc | 355 hö | själfsk. | 13.074.000 kr. |
| 911 Carrera 4 S Cabriolet | 3800 cc | 355 hö | beinsk. | 13.935.000 kr. |
| 911 Carrera 4 S Cabriolet | 3800 cc | 355 hö | själfsk. | 14.433.000 kr. |
| 911 Turbo Coupe | 3600 cc | 480 hö | beinsk. | 17.758.000 kr. |
| 911 Turbo Coupe | 3600 cc | 480 hö | själfsk. | 18.256.000 kr. |

Jeppar

| | | | | |
|-----------------|---------|--------|----------|----------------|
| Cayenne | 3200 cc | 250 hö | beinsk. | 6.308.000 kr. |
| Cayenne | 3200 cc | 250 hö | själfsk. | 6.740.000 kr. |
| Cayenne S | 4500 cc | 340 hö | beinsk. | 7.749.000 kr. |
| Cayenne S | 4500 cc | 340 hö | själfsk. | 8.181.000 kr. |
| Cayenne Turbo | 4500 cc | 450 hö | själfsk. | 13.344.000 kr. |
| Cayenne Turbo S | 4500 cc | 521 hö | själfsk. | 16.535.000 kr. |

RENAULT

3 dyra bilar

| | | | | |
|-----------|---------|--------|----------|---------------|
| Clio III | 1200 CC | 74 hö | beinsk. | 1.790.000 kr. |
| Megane II | 1600 cc | 115 hö | beinsk. | 1.990.000 kr. |
| Megane II | 1600 cc | 115 hö | själfsk. | 2.140.000 kr. |

4 dyra bílar

| | | | | |
|-------------------------|---------|--------|----------|---------------|
| Megane II Saloon | 1600 cc | 115 hö | beinsk. | 2.190.000 kr. |
| Megane II Saloon | 1600 cc | 115 hö | sjálfsk. | 2.340.000 kr. |
| Megane II Saloon diesel | 1900 cc | 130 hö | beinsk. | 2.670.000 kr. |

5 dyra bílar

| | | | | |
|------------------|---------|--------|----------|---------------|
| Clio III | 1200 cc | 74 hö | beinsk. | 1.890.000 kr. |
| Clio III | 1400 cc | 100 hö | beinsk. | 1.970.000 kr. |
| Clio III | 1600 cc | 112 hö | sjálfsk. | 2.190.000 kr. |
| Clio III diesel | 1500 cc | 86 hö | beinsk. | 2.190.000 kr. |
| Modus | 1200 cc | 75 hö | beinsk. | 1.790.000 kr. |
| Modus | 1400 cc | 100 hö | beinsk. | 1.970.000 kr. |
| Modus | 1600 cc | 111 hö | sjálfsk. | 2.190.000 kr. |
| Modus diesel | 1500 cc | 85 hö | beinsk. | 2.190.000 kr. |
| Megane II | 1600 cc | 115 hö | beinsk. | 2.090.000 kr. |
| Megane II | 1600 cc | 115 hö | sjálfsk. | 2.240.000 kr. |
| Megane II diesel | 1500 cc | 105 hö | beinsk. | 2.170.000 kr. |
| Megane II diesel | 1900 cc | 130 hö | beinsk. | 2.440.000 kr. |
| Laguna Berlíne | 2000 cc | 135 hö | sjálfsk. | 2.980.000 kr. |
| Laguna Brake | 2000 cc | 135 hö | sjálfsk. | 3.090.000 kr. |
| Megane Scenic | 1600 cc | 115 hö | beinsk. | 2.430.000 kr. |
| Megane Scenic | 1600 cc | 115 hö | sjálfsk. | 2.580.000 kr. |
| Megane Scenic | 2000 cc | 136 hö | beinsk. | 2.860.000 kr. |
| Megane Scenic | 2000 cc | 136 hö | sjálfsk. | 2.960.000 kr. |

Skutbílar

| | | | | |
|-------------------------------|---------|--------|----------|---------------|
| Megane II Sport Tourer | 1600 cc | 115 hö | beinsk. | 2.240.000 kr. |
| Megane II Sport Tourer | 1600 cc | 115 hö | sjálfsk. | 2.390.000 kr. |
| Megane II Sport Tourer diesel | 1600 cc | 130 hö | beinsk. | 2.720.000 kr. |

SAAB

4 dyra bílar

| | | | | |
|------------------------|---------|--------|----------|---------------|
| 9-3 Sport Sedan Linear | 1800 cc | 125 hö | beinsk. | 2.590.000 kr. |
| 9-3 Sport Sedan Linear | 2000 cc | 150 hö | sjálfsk. | 2.990.000 kr. |
| 9-3 Sport Sedan Arc | 2000 cc | 150 hö | sjálfsk. | 3.150.000 kr. |
| 9-5 Sport Sedan Arc | 2000 cc | 150 hö | sjálfsk. | 3.990.000 kr. |

5 dyra bílar

| | | | | |
|------------------------|---------|--------|----------|---------------|
| 9-3 Sport Combi Linear | 2000 cc | 150 hö | sjálfsk. | 3.090.000 kr. |
| 9-3 Sport Combi Arc | 2000 cc | 150 hö | sjálfsk. | 3.290.000 kr. |

Jeppar

| | | | | |
|-----------|---------|--------|----------|---------------|
| Saab 9-7x | 5300 cc | 300 hö | sjálfsk. | 5.790.000 kr. |
|-----------|---------|--------|----------|---------------|

SKODA

4 dyra bílar

| | | | | |
|----------------------|---------|--------|----------|---------------|
| Superb Comfort | 2000 cc | 115 hö | beinsk. | 2.520.000 kr. |
| Superb Comfort turbo | 1800 cc | 150 hö | beinsk. | 2.670.000 kr. |
| Superb Comfort turbo | 1800 cc | 150 hö | sjálfsk. | 2.830.000 kr. |
| Superb Elegance V6 | 2800 cc | 193 hö | sjálfsk. | 4.580.000 kr. |

5 dyra bílar

| | | | | |
|----------------------------|---------|--------|----------|---------------|
| Fabia Classic | 1200 cc | 64 hö | beinsk. | 1.420.000 kr. |
| Fabia Terno Comfort | 1200 cc | 64 hö | beinsk. | 1.610.000 kr. |
| Octavia Terno Ambiente | 1600 cc | 102 hö | beinsk. | 1.810.000 kr. |
| Octavia Terno Ambiente | 1600 cc | 102 hö | sjálfsk. | 1.990.000 kr. |
| Octavia Terno Ambiente TDI | 1900 cc | 100 hö | beinsk. | 2.030.000 kr. |
| Octavia Classic | 1600 cc | 102 hö | beinsk. | 2.050.000 kr. |
| Octavia Ambiente | 1600 cc | 102 hö | beinsk. | 2.190.000 kr. |
| Octavia Ambiente | 1600 cc | 102 hö | sjálfsk. | 2.390.000 kr. |
| Octavia Ambiente FSI | 2000 cc | 150 hö | beinsk. | 2.440.000 kr. |
| Octavia Ambiente FSI | 2000 cc | 150 hö | sjálfsk. | 2.640.000 kr. |
| Octavia Ambiente TDI | 1900 cc | 105 hö | beinsk. | 2.420.000 kr. |
| Octavia Ambiente TDI | 1900 cc | 105 hö | sjálfsk. | 2.580.000 kr. |
| Octavia Ambiente TDI | 2000 cc | 140 hö | beinsk. | 2.570.000 kr. |
| Octavia Ambiente TDI | 2000 cc | 140 hö | sjálfsk. | 2.740.000 kr. |
| Octavia Elegance | 1600 cc | 102 hö | beinsk. | 2.365.000 kr. |
| Octavia Elegance | 1600 cc | 102 hö | sjálfsk. | 2.565.000 kr. |
| Octavia Elegance FSI | 2000 cc | 150 hö | beinsk. | 2.615.000 kr. |
| Octavia Elegance FSI | 2000 cc | 150 hö | sjálfsk. | 2.815.000 kr. |
| Octavia Elegance TDI | 1900 cc | 105 hö | beinsk. | 2.595.000 kr. |
| Octavia Elegance TDI | 1900 cc | 105 hö | sjálfsk. | 2.755.000 kr. |
| Octavia Elegance TDI | 2000 cc | 140 hö | beinsk. | 2.745.000 kr. |
| Octavia Elegance TDI | 2000 cc | 140 hö | sjálfsk. | 2.915.000 kr. |
| Octavia RS TFSI | 2000 cc | 200 hö | beinsk. | 3.350.000 kr. |

Skutbílar

| | | | | |
|----------------------------|---------|--------|----------|---------------|
| Fabia Combi Comfort | 1200 cc | 64 hö | beinsk. | 1.530.000 kr. |
| Fabia Terno Combi Comfort | 1400 cc | 75 hö | sjálfsk. | 1.950.000 kr. |
| Octavia Combi Terno | 1600 cc | 102 hö | beinsk. | 1.890.000 kr. |
| Octavia Combi Terno | 1600 cc | 102 hö | sjálfsk. | 2.090.000 kr. |
| Octavia Combi Ambiente | 1600 cc | 102 hö | beinsk. | 2.250.000 kr. |
| Octavia Combi Ambiente | 1600 cc | 102 hö | sjálfsk. | 2.470.000 kr. |
| Octavia Combi Ambiente FSI | 2000 cc | 150 hö | beinsk. | 2.520.000 kr. |
| Octavia Combi Ambiente FSI | 2000 cc | 150 hö | sjálfsk. | 2.690.000 kr. |
| Octavia Combi Amb.TDI | 1900 cc | 105 hö | beinsk. | 2.480.000 kr. |
| Octavia Combi Amb. TDI | 1900 cc | 105 hö | sjálfsk. | 2.670.000 kr. |
| Octavia Combi Amb. TDI | 2000 cc | 140 hö | beinsk. | 2.640.000 kr. |
| Octavia Combi Amb. TDI | 2000 cc | 140 hö | sjálfsk. | 2.840.000 kr. |
| Octavia Combi Amb. FSI 4x4 | 2000 cc | 150 hö | beinsk. | 2.840.000 kr. |
| Octavia Combi Amb. TDI 4x4 | 1900 cc | 105 hö | beinsk. | 2.940.000 kr. |
| Octavia Combi Elegance | 1600 cc | 102 hö | beinsk. | 2.425.000 kr. |
| Octavia Combi Elegance | 1600 cc | 102 hö | sjálfsk. | 2.645.000 kr. |

| | | | | |
|----------------------------|---------|--------|----------|---------------|
| Octavia Combi Elegance FSI | 2000 cc | 150 hö | beinsk. | 2.695.000 kr. |
| Octavia Combi Elegance FSI | 2000 cc | 150 hö | sjálfsk. | 2.865.000 kr. |
| Octavia Combi Elegance TDI | 1900 cc | 105 hö | beinsk. | 2.655.000 kr. |
| Octavia Combi Elegance TDI | 1900 cc | 105 hö | sjálfsk. | 2.845.000 kr. |
| Octavia Combi Elegance TDI | 2000 cc | 140 hö | beinsk. | 2.815.000 kr. |
| Octavia Combi Elegance TDI | 2000 cc | 140 hö | sjálfsk. | 3.015.000 kr. |
| Octavia Combi RS TFSI | 2000 cc | 200 hö | beinsk. | 3.520.000 kr. |

SSANGYONG

Jeppar

| | | | | |
|--------|---------|--------|----------|---------------|
| Rexton | 2700 cc | 165 hö | beinsk. | 4.590.000 kr. |
| Rexton | 2700 cc | 165 hö | sjálfsk. | 4.790.000 kr. |
| Kyron | 2000 cc | 141 hö | beinsk. | 3.190.000 kr. |
| Kyron | 2000 cc | 141 hö | sjálfsk. | 3.495.000 kr. |

Pallbilar

| | | | | |
|--------------|---------|--------|----------|---------------|
| Musso Sports | 2900 cc | 129 hö | beinsk. | 2.495.000 kr. |
| Musso Sports | 2900 cc | 129 hö | sjálfsk. | 2.695.000 kr. |

SUBARU

4 dyra bílar

| | | | | |
|----------------------------|---------|--------|----------|---------------|
| Subaru Impreza Sedan 2.0R | 2000 cc | 160 hö | beinsk. | 2.110.000 kr. |
| Subaru Impreza Sedan 2.0R | 2000 cc | 160 hö | sjálfsk. | 2.260.000 kr. |
| Subaru Impr. Sedan WRX 2.5 | 2500 cc | 230 hö | beinsk. | 3.150.000 kr. |
| Legacy Sport Sedan | 2000 cc | 165 hö | beinsk. | 2.490.000 kr. |
| Legacy Sport Sedan | 2000 cc | 165 hö | sjálfsk. | 2.620.000 kr. |
| Legacy LUX Sedan | 2000 cc | 165 hö | sjálfsk. | 2.950.000 kr. |

Skutbilar

| | | | | |
|------------------------------|---------|--------|----------|---------------|
| Subaru Impreza Wagon 2.0R | 2000 cc | 160 hö | beinsk. | 2.160.000 kr. |
| Subaru Impreza Wagon 2.0R | 2000 cc | 160 hö | sjálfsk. | 2.290.000 kr. |
| Subaru Impreza Wagon WRX 2.5 | 2500 cc | 230 hö | beinsk. | 3.150.000 kr. |
| Legacy Sport Wagon | 2000 cc | 165 hö | beinsk. | 2.640.000 kr. |
| Legacy Sport Wagon | 2000 cc | 165 hö | sjálfsk. | 2.770.000 kr. |
| Legacy Cross Wagon | 2000 cc | 165 hö | beinsk. | 2.760.000 kr. |
| Legacy Cross Wagon | 2000 cc | 165 hö | sjálfsk. | 2.890.000 kr. |
| Legacy LUX Wagon | 2000 cc | 165 hö | sjálfsk. | 3.120.000 kr. |
| Subaru Outback 2.5 | 2500 cc | 165 hö | sjálfsk. | 3.390.000 kr. |

Jeppar

| | | | | |
|-----------------------|---------|--------|----------|---------------|
| Subaru Forester | 2000 cc | 158 hö | beinsk. | 2.490.000 kr. |
| Subaru Forester | 2000 cc | 158 hö | sjálfsk. | 2.590.000 kr. |
| Subaru Forester PLUS | 2000 cc | 158 hö | sjálfsk. | 2.790.000 kr. |
| Subaru Forester LUX | 2000 cc | 158 hö | sjálfsk. | 3.090.000 kr. |
| Subaru B9 Tribeca 3.0 | 3000 cc | 250 hö | sjálfsk. | 4.990.000 kr. |

SUZUKI

3 dyra bílar

| | | | | |
|-------------|---------|--------|---------|---------------|
| Swift Sport | 1600 cc | 125 hö | beinsk. | 1.980.000 kr. |
|-------------|---------|--------|---------|---------------|

5 dyra bílar

| | | | | |
|----------------|---------|--------|----------|---------------|
| Swift GL | 1500 cc | 102 hö | beinsk. | 1.589.000 kr. |
| Swift GL | 1500 cc | 102 hö | sjálfsk. | 1.729.000 kr. |
| Swift GL 4x4 | 1300 cc | 92 hö | beinsk. | 1.749.000 kr. |
| Swift diesel | 1300 cc | 70 hö | beinsk. | 1.759.000 kr. |
| Swift GLX | 1500 cc | 102 hö | beinsk. | 1.749.000 kr. |
| Swift GLX | 1500 cc | 102 hö | sjálfsk. | 1.889.000 kr. |
| Wagon R GL | 1300 cc | 92 hö | beinsk. | 1.440.000 kr. |
| Wagon R GL | 1300 cc | 93 hö | sjálfsk. | 1.570.000 kr. |
| Wagon R GL 4x4 | 1300 cc | 92 hö | beinsk. | 1.580.000 kr. |
| Ignis 1500 | 1500 cc | 99 hö | beinsk. | 1.540.000 kr. |
| Liana 1600 4x4 | 1600 cc | 106 hö | beinsk. | 1.950.000 kr. |
| Liana 1600 4x4 | 1600 cc | 106 hö | sjálfsk. | 2.090.000 kr. |
| SX4 GLX | 1600 cc | 107 hö | beinsk. | 2.089.000 kr. |
| SX4 GL | 2000 cc | 146 hö | beinsk. | 2.140.000 kr. |
| SX4 GLX | 2000 cc | 146 hö | beinsk. | 2.290.000 kr. |
| SX4 GLX | 2000 cc | 146 hö | sjálfsk. | 2.440.000 kr. |

Jeppar

| | | | | |
|---------------------------|---------|--------|----------|---------------|
| Jimny JLX 3dyra | 1300 cc | 85 hö | beinsk. | 1.859.000 kr. |
| Jimny JLX 3dyra | 1300 cc | 85 hö | sjálfsk. | 1.989.000 kr. |
| Grand Vitara Sport | 2000 cc | 140 hö | beinsk. | 2.790.000 kr. |
| Grand Vitara Sport | 2000 cc | 140 hö | sjálfsk. | 2.990.000 kr. |
| Grand Vitara Lux | 2000 cc | 140 hö | beinsk. | 3.170.000 kr. |
| Grand Vitara Lux | 2000 cc | 140 hö | sjálfsk. | 3.370.000 kr. |
| Grand Vitara Lux V6 | 2700 cc | 188 hö | sjálfsk. | 3.730.000 kr. |
| Grand Vitara Sport diesel | 1900 cc | 130 hö | beinsk. | 3.190.000 kr. |
| Grand Vitara Lux diesel | 1900 cc | 130 hö | beinsk. | 3.530.000 kr. |
| Grand Vitara XL7 | 2700 cc | 188 hö | beinsk. | 3.230.000 kr. |
| Grand Vitara XL7 | 2700 cc | 188 hö | sjálfsk. | 3.430.000 kr. |
| Grand Vitara XL7 Ltd | 2700 cc | 188 hö | sjálfsk. | 3.830.000 kr. |
| Grand Vitara XL7 diesel | 2000 cc | 109 hö | sjálfsk. | 3.190.000 kr. |

TOYOTA

3 dyra bílar

| | | | | |
|-----------|---------|-------|---------|---------------|
| Yaris Sol | 1300 cc | 87 hö | beinsk. | 1.679.000 kr. |
| Yaris | 1000 cc | 69 hö | beinsk. | 1.549.000 kr. |

4 dyra bílar

| | | | | |
|-------------------|---------|--------|----------|---------------|
| Avensis Sedan Sol | 1800 cc | 129 hö | beinsk. | 2.580.000 kr. |
| Avensis Sedan Sol | 1800 cc | 129 hö | sjálfsk. | 2.770.000 kr. |
| Avensis Sedan EXE | 2000 cc | 147 hö | sjálfsk. | 3.370.000 kr. |

5 dyra bílar

| | | | | |
|----------------------------|---------|--------|----------|---------------|
| Aygo | 1000 cc | 68 hö | beinsk. | 1.399.000 kr. |
| Aygo | 1000 cc | 68 hö | 5 MM | 1.469.000 kr. |
| Yaris | 1000 cc | 69 hö | beinsk. | 1.609.000 kr. |
| Yaris Sol | 1300 cc | 87 hö | beinsk. | 1.739.000 kr. |
| Yaris diesel | 1400 cc | 90 hö | beinsk. | 1.795.000 kr. |
| Yaris Sol | 1300 cc | 87 hö | MM | 1.809.000 kr. |
| Yaris Sol diesel | 1400 cc | 90 hö | MM | 1.920.000 kr. |
| Corolla Hatchback Terra | 1400 cc | 97 hö | beinsk. | 1.939.000 kr. |
| Corolla Hatchback diesel | 1400 cc | 90 hö | beinsk. | 2.010.000 kr. |
| Corolla Hatchback Terra | 1600 cc | 110 hö | sjálfsk. | 2.090.000 kr. |
| Corolla Hatchback Luna | 1600 cc | 110 hö | beinsk. | 2.140.000 kr. |
| Corolla Hatchback Sol | 1600 cc | 110 hö | sjálfsk. | 2.310.000 kr. |
| Corolla Verso Luna 7 manna | 1800 cc | 129 hö | beinsk. | 2.640.000 kr. |
| Corolla Verso Luna 7 manna | 1800 cc | 129 hö | MM | 2.740.000 kr. |
| Prius Hybrid | 1500 cc | 148 hö | sjálfsk. | 2.770.000 kr. |

Skutbílar

| | | | | |
|-------------------------------|---------|--------|----------|---------------|
| Corolla Wagon Terra | 1400 cc | 97 hö | beinsk. | 2.010.000 kr. |
| Corolla Wagon Luna | 1600 cc | 110 hö | beinsk. | 2.169.000 kr. |
| Avensis Wagon Sol | 1800 cc | 129 hö | beinsk. | 2.680.000 kr. |
| Avensis Wagon Sol | 1800 cc | 129 hö | sjálfsk. | 2.870.000 kr. |
| Avensis Wag. Sol turbo diesel | 2000 cc | 126 hö | beinsk. | 3.150.000 kr. |
| Avensis Wagon EXE | 2000 cc | 147 hö | sjálfsk. | 3.470.000 kr. |

Jeppar

| | | | | |
|------------------------------|---------|--------|----------|---------------|
| RAV4 4WD LX | 2000 cc | 150 hö | beinsk. | 2.970.000 kr. |
| RAV4 4WD GX | 2000 cc | 150 hö | beinsk. | 3.220.000 kr. |
| RAV4 4WD GX | 2000 cc | 150 hö | sjálfsk. | 3.370.000 kr. |
| RAV4 4WD VX | 2000 cc | 150 hö | beinsk. | 3.630.000 kr. |
| RAV4 4WD VX | 2000 cc | 150 hö | sjálfsk. | 3.790.000 kr. |
| RAV4 4WD GX turbo diesel | 2200 cc | 136 hö | beinsk. | 3.820.000 kr. |
| Land Cruiser LX turbo diesel | 3000 cc | 166 hö | beinsk. | 4.690.000 kr. |
| Land Cruiser LX turbo diesel | 3000 cc | 166 hö | sjálfsk. | 4.910.000 kr. |
| Land Cruiser GX turbo diesel | 3000 cc | 166 hö | beinsk. | 5.100.000 kr. |
| Land Cruiser GX turbo diesel | 3000 cc | 166 hö | sjálfsk. | 5.320.000 kr. |
| Land Cruiser GX bensín | 4000 cc | 249 hö | sjálfsk. | 5.450.000 kr. |
| Land Cruiser VX turbo diesel | 3000 cc | 166 hö | sjálfsk. | 5.960.000 kr. |
| Land Cruiser VX bensín | 4000 cc | 249 hö | sjálfsk. | 6.080.000 kr. |

Pallbílar

| | | | | |
|-----------------------------------|---------|--------|---------|---------------|
| Hilux X/C 4WD turbo diesel 2 dyra | 2500 cc | 102 hö | beinsk. | 2.830.000 kr. |
| Hilux D/C 4WD turbo diesel | 2500 cc | 102 hö | beinsk. | 2.860.000 kr. |

Sendibílar

| | | | | |
|-------------------------------|---------|--------|----------|---------------|
| Hiace 2WD stuttur diesel | 2500 cc | 117 hö | beinsk. | 2.499.000 kr. |
| Hiace 2WD langur turbo diesel | 2500 cc | 102 hö | sjálfsk. | 2.670.000 kr. |
| Hiace 4WD langur turbo diesel | 2500 cc | 117 hö | beinsk. | 2.860.000 kr. |

VOLKSWAGEN

3 dyra bílar

| | | | | |
|---------|---------|--------|----------|---------------|
| Fox | 1200 cc | 55 hö | beinsk. | 1.380.000 kr. |
| Fox TDI | 1400 cc | 70 hö | beinsk. | 1.620.000 kr. |
| Bjalla | 1600 cc | 102 hö | beinsk. | 2.460.000 kr. |
| Bjalla | 2000 cc | 115 hö | sjálfsk. | 2.850.000 kr. |

4 dyra bílar

| | | | | |
|---------------|---------|--------|--------------|---------------|
| Golf Plus FSI | 1600 cc | 115 hö | beinsk. | 2.450.000 kr. |
| Golf Plus FSI | 1600 cc | 115 hö | sjálfsk. | 2.640.000 kr. |
| Golf Plus TDI | 1900 cc | 105 hö | sjálfsk. | 2.850.000 kr. |
| Jetta | 1600 cc | 102 hö | beinsk. | 2.390.000 kr. |
| Jetta | 1600 cc | 102 hö | sjálfsk. | 2.610.000 kr. |
| Jetta | 2000 cc | 150 hö | sjálfsk. | 2.970.000 kr. |
| Jetta TDI | 1900 cc | 105 hö | sjálfsk. DSG | 2.870.000 kr. |
| Jetta TDI | 1900 cc | 105 hö | beinsk. | 2.670.000 kr. |
| Jetta TDI | 2000 cc | 140 hö | sjálfsk. DSG | 3.080.000 kr. |
| Passat FSI | 2000 cc | 150 hö | beinsk. | 2.920.000 kr. |
| Passat FSI | 2000 cc | 150 hö | sjálfsk. | 3.150.000 kr. |
| Passat FSI | 2000 cc | 150 hö | beinsk. | 3.280.000 kr. |
| Passat FSI | 2000 cc | 150 hö | sjálfsk. | 3.550.000 kr. |
| Passat TFSI | 2000 cc | 200 hö | beinsk. | 3.550.000 kr. |
| Passat TFSI | 2000 cc | 200 hö | sjálfsk. | 3.800.000 kr. |
| Passat TDI | 1900 cc | 105 hö | beinsk. | 2.850.000 kr. |
| Passat TDI | 2000 cc | 140 hö | beinsk. | 3.150.000 kr. |
| Passat TDI | 2000 cc | 140 hö | sjálfsk. DSG | 3.400.000 kr. |

5 dyra bílar

| | | | | |
|-------------------|---------|--------|----------|---------------|
| Polo | 1200 cc | 55 hö | beinsk. | 1.590.000 kr. |
| Polo | 1400 cc | 75 hö | beinsk. | 1.720.000 kr. |
| Polo | 1400 cc | 75 hö | sjálfsk. | 1.850.000 kr. |
| Polo TDI | 1400 cc | 70 hö | beinsk. | 1.900.000 kr. |
| Golf | 1600 cc | 102 hö | beinsk. | 1.998.000 kr. |
| Golf | 1600 cc | 102 hö | sjálfsk. | 2.440.000 kr. |
| Golf m/sportpakka | 1600 cc | 102 hö | beinsk. | 2.280.000 kr. |
| Golf m/sportpakka | 1600 cc | 102 hö | sjálfsk. | 2.500.000 kr. |
| Golf FSI | 2000 cc | 150 hö | beinsk. | 2.800.000 kr. |
| Golf FSI | 2000 cc | 150 hö | sjálfsk. | 2.980.000 kr. |
| Golf TDI | 1900 cc | 105 hö | beinsk. | 2.540.000 kr. |

| | | | |
|--------------|---------|--------------------|---------------|
| Golf TDI | 1900 cc | 105 hösjálfsk. DSG | 2.730.000 kr. |
| Golf GTI FSI | 2000 cc | 200 hö beinsk. | 3.290.000 kr. |
| Golf GTI FSI | 2000 cc | 200 hösjálfsk. DSG | 3.490.000 kr. |
| Touran | 1600 cc | 102 hö beinsk. | 2.510.000 kr. |
| Touran FSI | 1600 cc | 115 hö sjálfsk. | 2.950.000 kr. |
| Touran TDI | 1900 cc | 105 hösjálfsk. DSG | 3.110.000 kr. |
| Sharan turbo | 1800 cc | 150 hö sjálfsk. | 3.650.000 kr. |
| Sharan TDI | 1900 cc | 115 hö beinsk. | 3.400.000 kr. |
| Sharan TDI | 1900 cc | 115 hö sjálfsk. | 3.600.000 kr. |

Skutbilar

| | | | |
|----------------------------|---------|--------------------|---------------|
| Passat Variant FSI | 2000 cc | 150 hö beinsk. | 3.065.000 kr. |
| Passat Variant FSI | 2000 cc | 150 hö sjálfsk. | 3.310.000 kr. |
| Passat Variant FSI | 2000 cc | 150 hö sjálfsk. | 3.690.000 kr. |
| Passat Variant TDI | 1900 cc | 105 hö beinsk. | 2.950.000 kr. |
| Passat Variant TDI | 2000 cc | 140 hö beinsk. | 3.350.000 kr. |
| Passat Variant TDI | 2000 cc | 140 hösjálfsk. DSG | 3.550.000 kr. |
| Passat Variant 4Motion | 2000 cc | 150 hö beinsk. | 3.270.000 kr. |
| Passat Variant TDI 4Motion | 2000 cc | 140 hö beinsk. | 3.500.000 kr. |

Jeppar

| | | | |
|-----------------|---------|-----------------|---------------|
| Touareg R5 TDI | 2500 cc | 174 hö sjálfsk. | 5.890.000 kr. |
| Touareg V6 TDI | 3000 cc | 225 hö sjálfsk. | 6.560.000 kr. |
| Touareg V10 TDI | 5000 cc | 313 hö sjálfsk. | 8.960.000 kr. |
| Touareg V6 | 3200 cc | 280 hö sjálfsk. | 6.290.000 kr. |
| Touareg V8 | 4200 cc | 310 hö sjálfsk. | 7.970.000 kr. |

Sendibilar

| | | | |
|--------------------|---------|-----------------|---------------|
| Caddy | 1400 cc | 80 hö beinsk. | 1.810.000 kr. |
| Caddy | 1600 cc | 105 hö beinsk. | 1.965.000 kr. |
| Caddy Life | 1400 cc | 80 hö beinsk. | 2.080.000 kr. |
| Caddy SDI | 2000 cc | 70 hö beinsk. | 1.915.000 kr. |
| Caddy Life TDI | 1900 cc | 75 hö beinsk. | 2.195.000 kr. |
| Caddy Life TDI | 1900 cc | 105 hö beinsk. | 2.395.000 kr. |
| Caddy Life TDI | 1900 cc | 105 hö sjálfsk. | 2.635.000 kr. |
| Caddy TDI | 1900 cc | 105 hö beinsk. | 2.165.000 kr. |
| Caddy EcoFuel | 2000 cc | 109 hö beinsk. | 1.990.000 kr. |
| Caddy EcoFuel Life | 2000 cc | 109 hö beinsk. | 2.250.000 kr. |

VOLVO

2 dyra bílar

| | | | |
|--------------|---------|-----------------|---------------|
| C70 | 2400 cc | 170 hö beinsk. | 4.790.000 kr. |
| C70 | 2400 cc | 170 hö sjálfsk. | 4.990.000 kr. |
| C70 T5 turbo | 2500 cc | 220 hö beinsk. | 5.190.000 kr. |
| C70 T5 turbo | 2500 cc | 220 hö sjálfsk. | 5.390.000 kr. |
| C70 D5 | 2400 cc | 180 hö sjálfsk. | 5.390.000 kr. |

4 dyra bílar

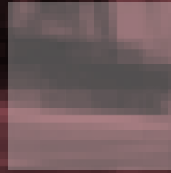
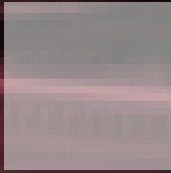
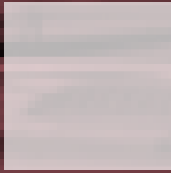
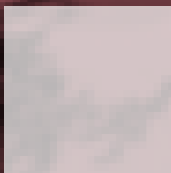
| | | | |
|------------------|---------|-----------------|---------------|
| S40 | 1600 cc | 100 hö beinsk. | 2.695.000 kr. |
| S40 | 2000 cc | 145 hö beinsk. | 2.895.000 kr. |
| S40 | 2400 cc | 140 hö sjálfsk. | 3.340.000 kr. |
| S40 T5 turbo | 2500 cc | 220 hö beinsk. | 3.595.000 kr. |
| S40 T5 turbo | 2500 cc | 220 hö sjálfsk. | 3.795.000 kr. |
| S40 T5 AWD turbo | 2500 cc | 220 hö beinsk. | 3.975.000 kr. |
| S40 T5 AWD turbo | 2500 cc | 220 hö sjálfsk. | 4.175.000 kr. |
| S40D turbo | 1600 cc | 109 hö beinsk. | 2.895.000 kr. |
| S40D turbo | 2000 cc | 136 hö beinsk. | 3.090.000 kr. |
| S40 D5 turbo | 2400 cc | 180 hö sjálfsk. | 4.175.000 kr. |
| S60 turbo | 2000 cc | 180 hö beinsk. | 3.830.000 kr. |
| S60 turbo | 2000 cc | 180 hö sjálfsk. | 3.990.000 kr. |
| S60 AWD turbo | 2500 cc | 210 hö beinsk. | 4.630.000 kr. |
| S60 AWD turbo | 2500 cc | 210 hö sjálfsk. | 4.830.000 kr. |
| S60 T5 turbo | 2400 cc | 260 hö beinsk. | 4.630.000 kr. |
| S60 T5 turbo | 2400 cc | 260 hö sjálfsk. | 4.830.000 kr. |
| S80 turbo | 2500 cc | 200 hö sjálfsk. | 4.690.000 kr. |
| S80 D5 turbo | 2400 cc | 185 hö sjálfsk. | 5.190.000 kr. |
| S80 AWD V8 | 4400 cc | 315 hö sjálfsk. | 5.940.000 kr. |

Skutbilar

| | | | |
|------------------|---------|-----------------|---------------|
| V50 | 1600 cc | 100 hö beinsk. | 2.830.000 kr. |
| V50 | 2000 cc | 145 hö beinsk. | 3.030.000 kr. |
| V50 | 2400 cc | 140 hö sjálfsk. | 3.475.000 kr. |
| V50 T5 turbo | 2500 cc | 220 hö beinsk. | 3.730.000 kr. |
| V50 T5 turbo | 2500 cc | 220 hö sjálfsk. | 3.930.000 kr. |
| V50 T5 AWD turbo | 2500 cc | 220 hö beinsk. | 4.110.000 kr. |
| V50 T5 AWD turbo | 2500 cc | 220 hö sjálfsk. | 4.310.000 kr. |
| V50D turbo | 1600 cc | 109 hö beinsk. | 3.030.000 kr. |
| V50D turbo | 2000 cc | 136 hö beinsk. | 3.225.000 kr. |
| V50 D5 turbo | 2400 cc | 180 hö sjálfsk. | 4.310.000 kr. |
| V70 turbo | 2000 cc | 180 hö beinsk. | 4.170.000 kr. |
| V70 turbo | 2000 cc | 180 hö sjálfsk. | 4.330.000 kr. |
| V70 D5 turbo | 2400 cc | 185 hö beinsk. | 4.790.000 kr. |
| V70 D5 turbo | 2400 cc | 185 hö sjálfsk. | 4.950.000 kr. |

Jeppar

| | | | |
|---------------|---------|-----------------|---------------|
| XC70 turbo | 2500 cc | 210 hö sjálfsk. | 5.330.000 kr. |
| XC70 D5 turbo | 2400 cc | 185 hö sjálfsk. | 5.830.000 kr. |
| XC90 turbo | 2500 cc | 210 hö sjálfsk. | 6.090.000 kr. |
| XC90 6 cyl | 3200 cc | 238 hö sjálfsk. | 6.590.000 kr. |
| XC90 V8 | 4400 cc | 315 hö sjálfsk. | 6.990.000 kr. |
| XC90 D5 | 2400 cc | 185 hö sjálfsk. | 6.590.000 kr. |



RSK 6.03
GEFID ÚT AF
RÍKISSKATTSTJÓRA
Í JANÚAR 2007
ÚTLIT OG UMBROT RSK
PRENTUN VÍÐEY